

SING-TAO

以品质为中心
QUALITY FIRST



SING-TAO

卫生级蝶阀

SANITARY BUTTERFLY VALVE

卫生级无菌阀门

Sterile, Aseptic and Sanitary Valves



☎ 电话: +0512-6529 3059
Tel.: +0512-6529 3059

✉ 邮箱: business@sing-tao.com.cn
Email: business@sing-tao.com.cn

📍 地址: 中国 (江苏) 自由贸易试验区苏州片区旺墩路188号建屋大厦1幢5层
Address: Floor 5, Building 1, Genway Building 1, No. 188 Wangdun Road, Suzhou District, China
(Jiangsu) Pilot Free Trade Zone

卫生级蝶阀 SANITARY BUTTERFLY VALVE



应用: 根据ISO、ASME BPE、DIN标准设计, 用于食品饮料、酿造、生物制药等领域。

特点: 不锈钢卫生级蝶阀不仅结构简单、体积小、重量轻、材料耗用省, 安装尺寸小、而且驱动力矩小, 操作简便、迅速, 具有良好的流量调节功能和关闭密封特性。在完全开启时, 具有较小的流阻, 当开启在大约15°至70°之间时, 又能进行灵敏的流量控制, 因而在大口径的调节领域, 蝶阀的应用非常普遍。

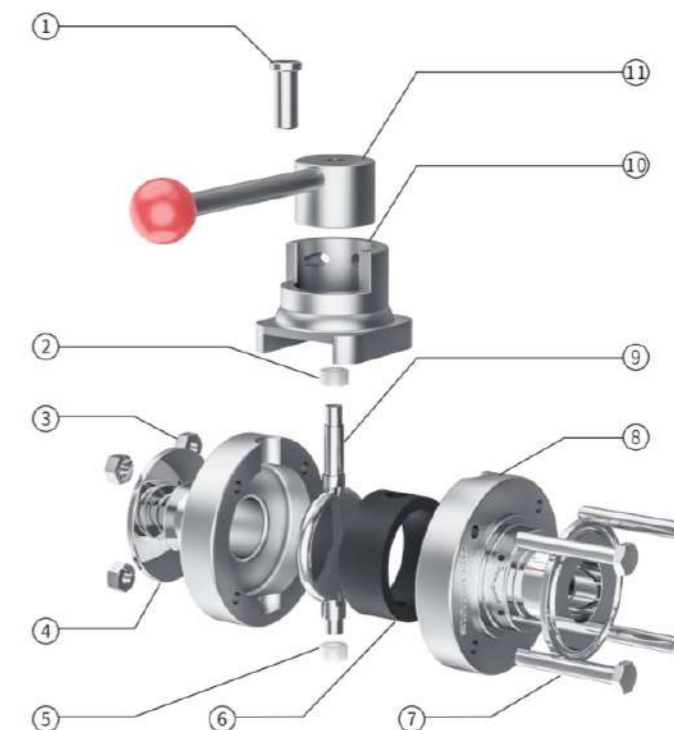
Application: Designed according to ISO, ASME BPE and DIN standards, it is used in food and beverage, brewing, biopharmaceutical and other fields.

Features: Stainless steel butterfly valve is simple in structure, small in dimension, light in weight, low in material consumption, small in installation dimension, small in driving torque, simple and quick to operate, and has good flow regulating function and closing and sealing characteristics. When it is fully opened, it has a small flow resistance, and when it is opened between about 15° and 70°, it can perform sensitive flow control. Therefore, butterfly valves are widely used in the field of large-diameter regulation.

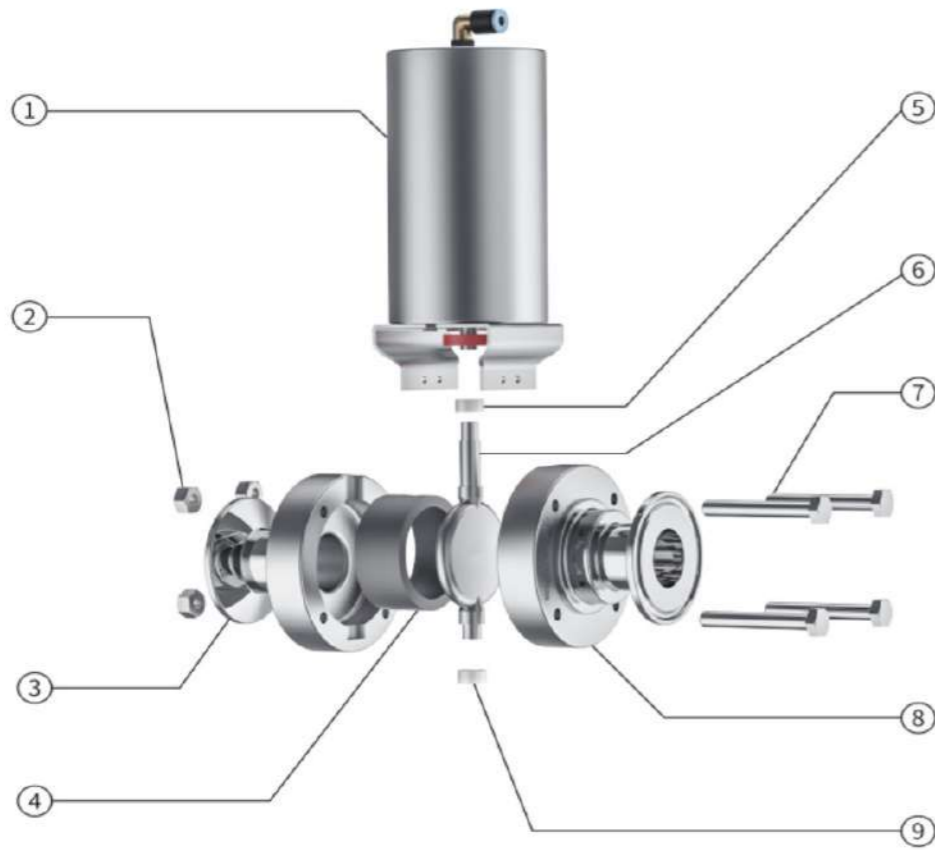
尺寸范围: DN25-DN100 (1"-4") Dimension range: DN25-DN100(1"-4")	自控单元: 反馈装置 Automatic control unit: Feedback unit
工作温度: EPDM-20°C-120°C、VITON-20°C-150°C SILICON-20°C-180°C Working temperature: EPDM-20°C-130°C、VITON-20°C-150°C SILICON-20°C-180°C	阀座材质: EPDM、VITON、SILICON Seat material: EPDM, VITON, SILICON
压力等级: 16bar Pressure rating: 16bar	阀体材质: 304/316L Body material: 304/316L
驱动方式: 手动/气动 Driving mode: Manual/Pneumatic	接口形式: 卡盘 Interface form: Clamp
	设计标准: ASME BPE、3A Standard: ASME BPE and 3A

- 阀杆镶装尼龙轴套, 降低阀杆磨损风险的同时也减小了摩擦力因而使阀门开启灵活轻松。
The valve stem is inlaid with nylon sleeve, which reduces the risk of valve stem wear and friction, thus making the valve open flexibly and easily.
- 阀体通径与管道内径等径, 流量大而阻力小, 无物料积聚。
The diameter of the valve body is equal to the inner diameter of the pipeline, with large flow and low resistance, and no material accumulation.

- 手柄采用鸭嘴式或拉杆式, 可获得较大操作力矩。
The handle adopts duckbill type or pull rod type, which can obtain larger operating torque.
- 开闭具有可调性, 且操作方便。
The opening and closing can be adjusted, and the operation is convenient.
- 阀体均采用可拆连接, 结构简单, 维修方便。
All valve bodies adopt detachable connection, with simple structure and convenient maintenance.



编号 No.	描述 Description	材质 (EN) Material (EN)
1	内六角螺钉 Inner hexagon screw	A193B8/B8M
2	耐磨环 Wear-resistant ring	NYLON
3	螺母 Nut	A1948/8M
4	左阀体 Left valve body	F304/F316L
5	耐磨环 Wear-resistant ring	NYLON
6	密封圈 Sealing ring	EPDM, VITON, SILICON
7	螺栓 Bolt	A193B8/B8M
8	右阀体 Right valve body	F304/F316L
9	蝶板 Butterfly plate	304/316L
10	阀盖 Valve cover	F304/F316L
11	手柄 Handle	SS304

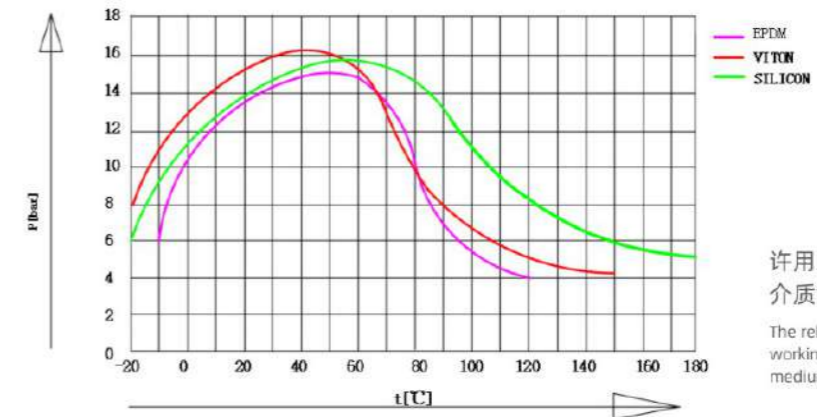


编号 No.	描述 Description	材质 (EN) Material (EN)
1	不锈钢气动执行器 Stainless steel pneumatic actuators	Ss304
2	螺母 Nut	A1948/8M
3	左阀体 Left valve body	F304/F316L
4	密封圈 Sealing ring	EPDM, VITON, SILICON
5	耐磨环 Wear-resistant ring	NYLON
6	蝶板 Butterfly plate	304/316L
7	螺栓 Bolt	A193B8/B8M
8	右阀体 Right valve body	F304/F316L
9	耐磨环 Wear-resistant ring	NYLON

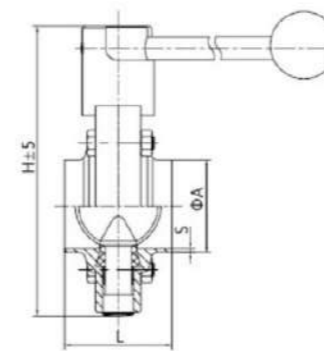
压力-温度额定值
Rated Pressure-temperature Values

星岛卫生级蝶阀采用橡胶材质的密封圈，有EPDM和FPM(改性PTFE)可选，密封圈材质的使用温度-压力额定值决定阀门在不同温度下的表现性能。选择蝶阀密封圈材质时，请参照左表：

SingTao butterfly valve adopts rubber sealing ring, and EPDM and FPM (modified PTFE) are available. The service temperature-pressure rating of sealing ring determines the performance of the valve at different temperatures. Please refer to the following table when selecting the sealing ring material of butterfly valve:

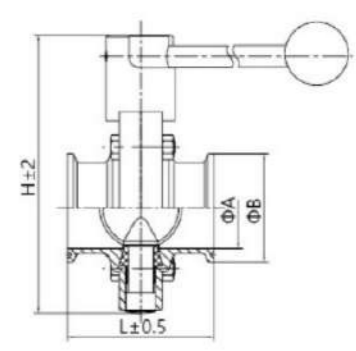


许用工作压力p与
介质温度t的关系：
The relationship between
working pressure p and
medium temperature t:



手动焊接式
Manual welding type

尺寸 Size	A	S	L	H
DN20	19.1	1.65	50	120
DN25	25.4	1.65	50	120
DN40	38.1	1.65	50	130
DN50	50.8	1.65	52	150
DN65	63.5	1.65	56	170
DN80	76.2	1.65	56	188
DN100	101.6	2.11	64	208



手动卡接式
Manual clamping type

尺寸 Size	A	B	L	H
DN20	15.8	25	66	120
DN25	22.1	50.5	66	120
DN40	34.8	50.5	70	130
DN50	47.5	64	76	150
DN65	60.2	77.5	80	170
DN80	72.9	91	84	188
DN100	97.4	119	104	208

蝶阀编码、代号规则
Butterfly valve coding and coding rules

位号 Tag Number	1	2	3、4	5	6	7	8	9	10	11	12
代码 Code	F	1	40	P	P	S	1	D	P	Z	M
属性定义 Property definition	阀门类型 Valve type	控制形式 Control form	口径 Caliber	流道 Runner	口径标准 Caliber standard	连接形式 Connection form	蝶阀形式 Butterfly plate form	阀体材质 Body material	阀座材质 Seat material	其他 Other	抛光 Polishing

位号 Tag Number	代码 Code	阀门类型 Valve type
1	F	蝶阀 Butterfly valve
2	代码 Code	控制形式 Control form
	1	拉杆式手柄 Lever handle
	2	鸭嘴式手柄 Duck billed handle
	4	单作用不锈钢, 不带附件 Single acting stainless steel, without accessories
	7	单作用不锈钢, 带位置反馈 Single acting stainless steel with position feedback
	8	双作用不锈钢, 不带附件 Double acting stainless steel, without accessories
	9	单作用不锈钢, 带电磁阀 Single acting stainless steel with solenoid valve
	A	双作用不锈钢, 带位置反馈 Double acting stainless steel with position feedback
B	双作用不锈钢, 带电磁阀 Double acting stainless steel with solenoid valve	

气动卡接式
Pneumatic clamping type

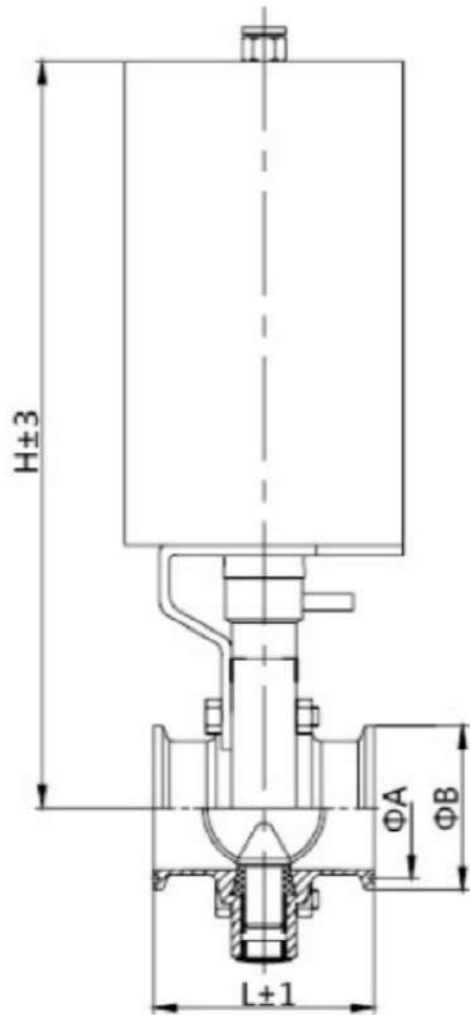
尺寸 Size	A	B	L	H
DN20	15.8	25	66	225
DN25	26	50.5	66	225
DN40	38	50.5	70	232
DN50	50	64	76	240
DN65	66	91	80	250
DN80	81	106	84	257
DN100	100	119	104	267

气动焊接式-ASME BPE
Pneumatic welding -ASME BPE

尺寸 Size	A	B	L	H
DN20	15.8	25	66	225
DN25	26	50.5	66	225
DN40	38	50.5	70	232
DN50	50	64	76	240
DN65	66	91	80	250
DN80	81	106	84	257
DN100	100	119	104	267

手动卡接式-ASME BPE/ISO
Manual clamping type -ASME BPE/ISO

尺寸 Size	A	S	L	H
DN20	19.1	1.65	50	225
DN25	25.4	1.65	50	225
DN40	38.1	1.65	50	232
DN50	50.8	1.65	52	240
DN65	63.5	1.65	56	250
DN80	76.2	1.65	56	257
DN100	101.6	2.11	64	267



星岛系列-6 卫生级蝶阀

Sing-Tao Series-6 Sanitary Butterfly Valve

位号 Tag Number	代码 Code	口径 Caliber
3、4	25	25 1"
	32	32 1 1/4"
	40	40 1 1/2"
	50	50 2"
	65	65 2 1/2"
	80	80 3"
	1A	100 4"
5	代码 Code	流道 Runner
	P	全通径 Full bore
	R	缩径 Reduced diameter
6	代码 Code	口径标准 Caliber standard
	P	ASME BPE
	I	ISO 2037
7	代码 Code	连接形式 Connection form
	S	卡盘 Tri-Clamp
	W	焊接 Weld
8	代码 Code	蝶板形式 Butterfly plate form
	1	轴线中心式 Axis centered
	2	轴线偏心式 Axis eccentric type

位号 Tag Number	代码 Code	阀体材质 Body material
9	D	A182 F304(锻造304) A182 F304 (Forged 304)
	E	A182 F316L(锻造316L) A182 F316L (Forged 316L)
10	代码 Code	阀座材质 Seat material
	P	EPDM EPDM
	V	氟橡胶 Fluororubber
	G	硅橡胶 Silicon rubber
11	代码 Code	其他 Other
	Z	手动 Manual
	C	气动常闭 Pneumatic normally closed
	O	气动常开 Pneumatic normally open
12	代码 Code	抛光 Burnishing
	M	机械抛光 Mechanical polishing
	E	电解抛光 Electrolytic polishing
	O	其他 Other

SING-TAO

SING-TAO

以品质为中心
QUALITY FIRST



产品手册

PRODUCT MANUAL

值得信赖的新加坡控制阀门制造商
A reliable control valve manufacturer in Singapore

☎ 电话: +0512-6529 3059
Tel.: +0512-6529 3059

✉ 邮箱: business@sing-tao.com.cn
Email: business@sing-tao.com.cn

📍 地址: 中国 (江苏) 自由贸易试验区苏州片区旺墩路188号建屋大厦1幢5层
Address: Floor 5, Building 1, Genway Building 1, No. 188 Wangdun Road, Suzhou District, China
(Jiangsu) Pilot Free Trade Zone

“SINGTAO”正快速成为ROCK SINGAPORE三大业务板块之一，我们擅长提供用于生物医药、食品日化、真空半导体领域相关控制阀门，包括以电流控制、气压控制、人工干预为驱动形式的洁净类阀门，如洁净蒸汽疏水阀、隔膜无滞式阀、整圆球形阀、倾角形截止阀、单向流阀或止回阀、减压式阀、蝶片式阀、防混阀、稳压式阀等，每种阀型我们有专职研发工程师，通过持续性的改良使得产品更匹配工艺需求和用户特定的结构需求。

在流体控制领域超过20年工艺控制的经验积累，是SingTao工程师们能够为用户提供解决方案的信心所在。挑战最苛刻的环境应用、让工业品工艺化，使我们在材料选择/细微计量/精密成型/外型设计方面持续优化。我们非常享受能够带给用户愉悦的应用体验，这也是工程师们快乐的动力。

我们一直在确保我们的产品在品质管控和最佳实践方面以先进工业国家质量标准及专业指南为参考，包括ISO、SS、3A、ASME、MSS、SGS等。凭借对产品质量的持续坚持，我们积极融入EHEDG和FPSA，得益于这些组织的信息分享，我们能够通过提供量身定制的综合解决方案来解决对用户的运营发挥至关重要的、具有挑战性的阀门应用需求，并确保最终的可靠性和更低的长期拥有成本。这也帮助我们成为流体控制行业值得信赖的合作伙伴。

新加坡发达的国际自由贸易和非排他性融合文化，吸引着无数的世界精英，繁忙的马六甲海峡促进了无限的经济活力。我们以此为研发、贸易中心，开拓包括中国大陆、印度在内的亚洲及欧美市场。为满足用户装配应用及成本效率管控需求，快速响应是重要途径，我们将按区域特征陆续规划建立适度库存并招募高效灵活的服务工程师。

荣幸的是，收到邀请我们于2022年正式在充满生机的新加坡-中国苏州工业园区成立大中华区第一家“星岛”阀门代表处，贴近服务作为全球第二经济体的中国市场，无疑是令人振奋的！



"SINGTAO" is fast becoming one of ROCK SINGAPORE's three business segments, specializing in the supply of bio-pharmaceutical, food daily chemical, vacuum semiconductor related control valves, including current control, pressure control, manual intervention as the driving form of clean valves. Such as clean steam trap, diaphragm non-stagnation valve, spherical valve, tilt globe valve, check valve, pressure relief valve, disc valve, anti-mixing valve, pressure regulator valve, etc. We have full-time R&D engineers for each type of valve, and through continuous improvement, the products are better matched to the process needs and user-specific structural needs.

With more than 20 years of experience in process control in the field of fluid control, SingTao engineers are confident that they will be able to provide solutions to their users. Challenging the most demanding environmental applications and making industrial processes enable us to continuously optimize in material selection, micrometering, precision molding, and shape design. We really enjoy the product experience that brings pleasure to users, which is also the motivation for engineers to work happily.

In terms of quality control and best practices, we always ensure that our products are based on the quality standards and professional guidelines of advanced industrial countries, including ISO, SS, 3A, ASME, MSS, SGS, etc. With our continued commitment to product quality, we are actively involved in EHEDG and FPSA, and thanks to the information sharing of these organizations, we are able to provide tailored, integrated solutions to address challenging application needs of valve that are critical to our users' operations, ensuring ultimate reliability and lower long-term cost of ownership. Which also helps us to be a trusted partner in the fluid control industry.

Singapore's well-developed international free trade and non-exclusive integration culture attract countless world elites, and the busy Strait of Malacca promotes unlimited economic vitality. We use this as a R&D and trade center to develop markets in Asia, Europe and the United States, including Chinese and India. In order to meet the needs of users for assembly applications and cost efficiency control, rapid response is an important way, we will plan to establish a moderate inventory and recruit efficient and flexible service engineers according to regional characteristics.

It is an honor to receive the invitation to officially set up the first "SingTao" valve representative office in Singapore-China Suzhou Industrial Park in 2022, close to serving the Chinese market as the world's second economy, which is undoubtedly exciting.

企业愿景 ENTERPRISE VISION

让体验超过预期
Let the experience exceed expectations



产品可追溯性 TRACEABILITY OF PRODUCTS

星岛每个产品均标记有品牌标识、材料、尺寸和可追溯的产品编号。这些信息和客户的购买记录，在我们的系统中都有良好的记录和跟踪。

Each SingTao product is labeled with the brand identification, material, dimension and traceable product number. Such information and customer purchase records are well documented and tracked in our system.

星岛的长期目标是“提高产品生命周期、提供个性化解决方案、使产品更符合工艺的特征”。

SingTao long-term goals are to "improve product life cycle, provide personalized solutions, and make products more consistent with the characteristics of the process".

一、主要产品系列

I. SERIES OF MAIN PRODUCTS

- 隔膜阀
Diaphragm valve
- 柱塞式罐底阀
Plunger tank bottom valve
- 取样阀
Sampling valve
- 疏水阀
Drain valve
- 球阀
Ball valve
- 单向阀
Check valve
- 角座阀
Angle seat valve

二、应用场景

II. APPLICATION SCENARIO

卫生级隔膜阀 SANITARY DIAPHRAGM VALVE

两通隔膜阀
Two-way Diaphragm Valves



应用: 根据ASME BPE、GMP等卫生标准设计, 用于食品饮料、乳品、生物制药等领域。

特点: 阀体结构无滞留区或无死角, 实现自排尽, 介质接触部分材料无析出、无毒性、耐高温、耐腐蚀。适用于各种卫生等级较高的工艺管线, 可以配合电磁阀或定位器使用, 具有精准流量调节等功能。

Application: It is designed according to ASME BPE, GMP and other sanitary standards and used in food and beverage, dairy products, bio-pharmaceutical and other fields.

Features: There is no residue and dead angle to the valve body structure, so that the self-exhaustion can be achieved, and the materials contacted with the medium are non-precipitating, non-toxic, high temperature-resistant and corrosion-resistant. It is applicable for all kinds of process pipelines with high sanitary grade, can be used with solenoid valve or positioner, which has the function such as precise flow regulation.

尺寸范围: DN10-DN100 (3/8"-4") Dimension range: DN10-DN100 (3/8"-4")	膜片材质或密封材质: PTFE&EPDM Diaphragm or sealing material: PTFE&EPDM
工作温度: -10°C-150°C Working temperature: -10°C-150°C	阀体材质: 316L/1.4404/1.4435 Body material: 316L/1.4404/1.4435
压力等级: 10bar Pressure rating: 10bar	接口形式: 焊接、卡接 Interface form: Welding and clamping
驱动方式: 手动/气动 Drive mode: Manual/pneumatic	设计标准: ASME BPE、3A Standard: ASME BPE and 3A
自控单元: 反馈装置、定位装置 Automatic control unit: Feedback device and locating device	

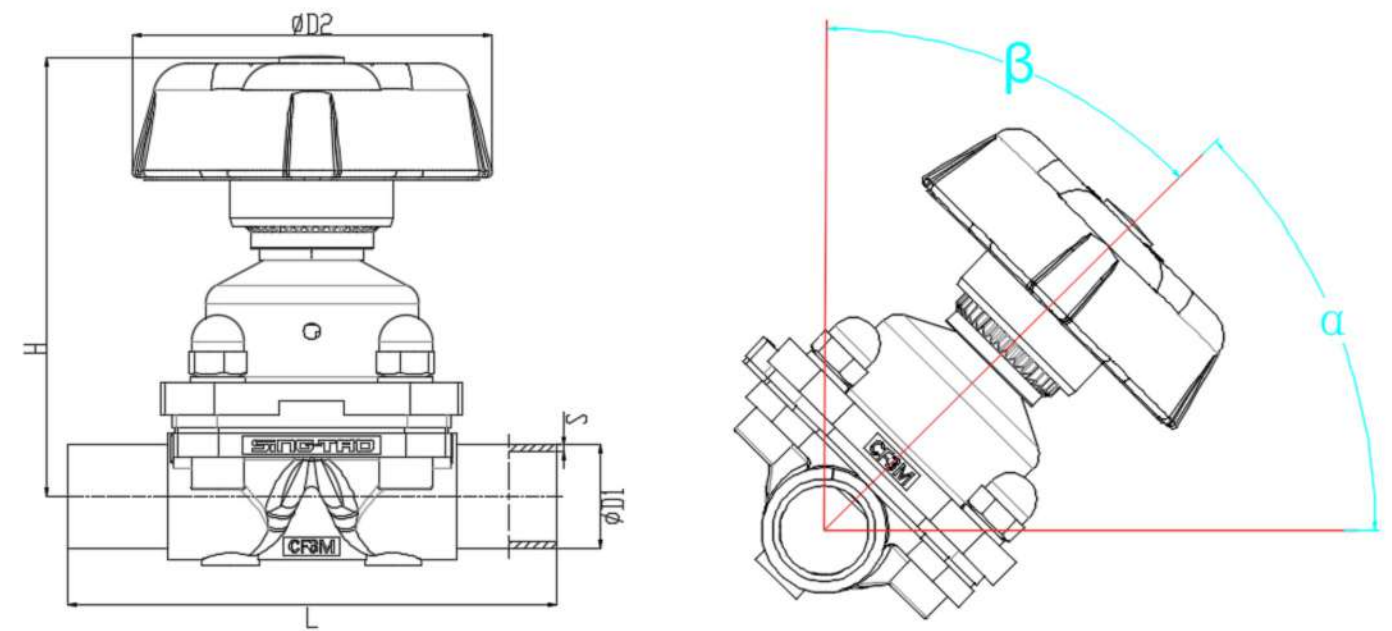
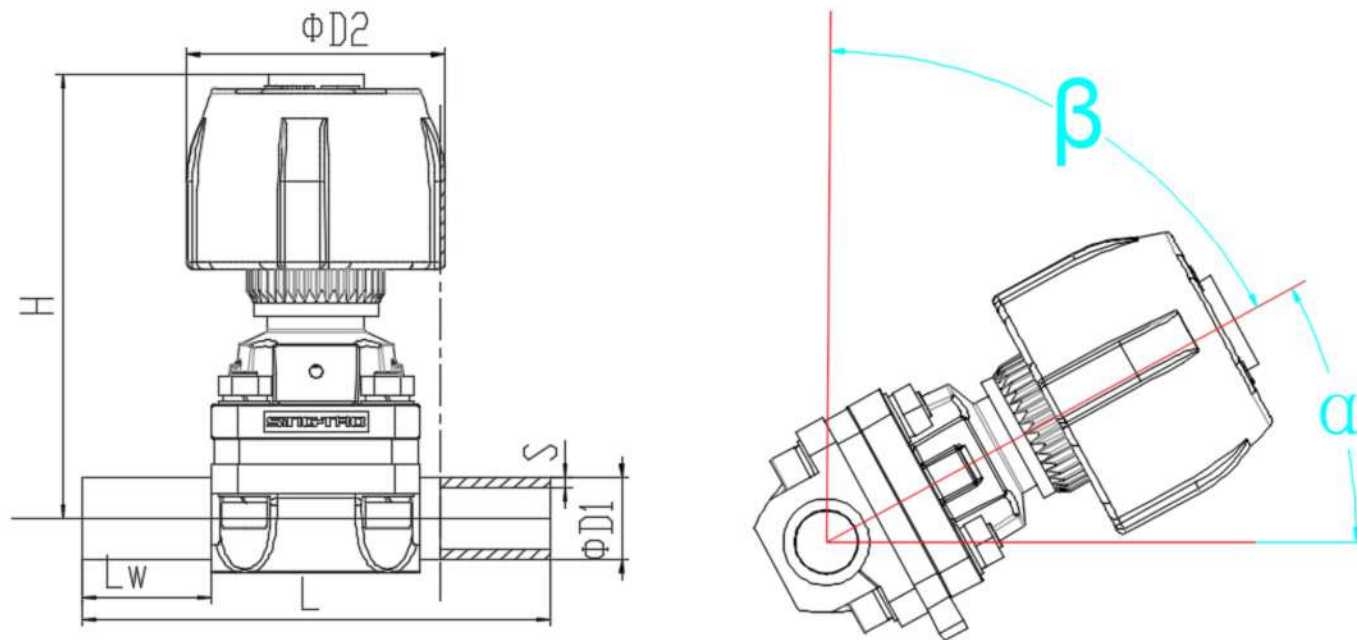
- 零死角无滞留
Zero dead angle and no residue
- 优异的自排净性能
Excellent self-emission performance
- 安全无毒的材料选择
Safe and non-toxic material selection
- 耐高温、长寿命膜片
High temperature-resistant and long-life diaphragm

编号 No.	描述 Description	材质 (EN) Material (EN)
1	手轮 Handwheel	Nylon PA6
2	限位块 Limit block	Nylon PA6
3	指示圈 Indicator ring	Nylon PA6
4	带帽螺母 Cap nut	A194 8M
5	弹簧垫圈 Spring washer	SS 304
6	阀盖 Valve cover	A351 CF3M
7	阀杆 Valve stem	A182 F316L
8	耐磨垫 Wear pads	PEEK
9	紧定螺母 Lock nut	T3
10	导向块 Guide block	A351 CF3M
11	膜片内衬 Diaphragm lining	EPDM
12	膜片 Diaphragm	PTFE
13	阀体 Valve body	A351 CF3M/F316L/1.4404/1.4435
14	内六角螺钉 Inner hexagon screw	A194 B8M

编号 No.	名称 Name	材质 (EN) Materials
1	气动执行器 Pneumatic actuator	不锈钢组件 Stainless steel components
2	弹簧垫圈 Spring washer	SS 304
3	紧定螺母 Lock nut	T3
4	膜片内衬 Diaphragm lining	EPDM
5	阀体 Valve body	A351 CF3M/F316L/1.4404
6	带帽螺母 Cap nut	A194 8M
7	耐磨垫 Wear pads	PEEK
8	导向块 Guide block	A351 CF3M
9	膜片 Diaphragm	EPDM+PTFE / EPDM
10	内六角螺钉 Inner hexagon screw	A194 B8M



隔膜阀尺寸表
Dimension table of diaphragm valve

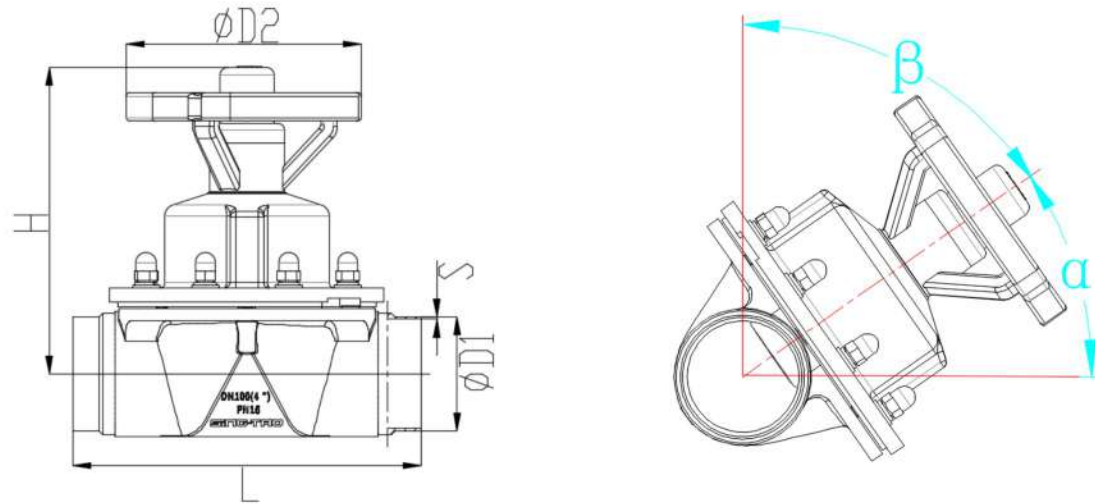


手动焊接阀尺寸和排净角度（小手轮）
Manual welding valve size and discharge angle (small handwheel)

尺寸 Size	英寸 Inch	L	Lw	ΦD1	S	H	ΦD2	排净角度α Emission angle α	排净角度β Emission angle β
DN8	1/4	72	DN8	DN8	6.35	70	40	30.5	59.5
DN10	3/8	72	DN10	DN10	9.53	70	40	22	68
DN15	1/2	72	DN15	DN15	12.7	70	40	17	73

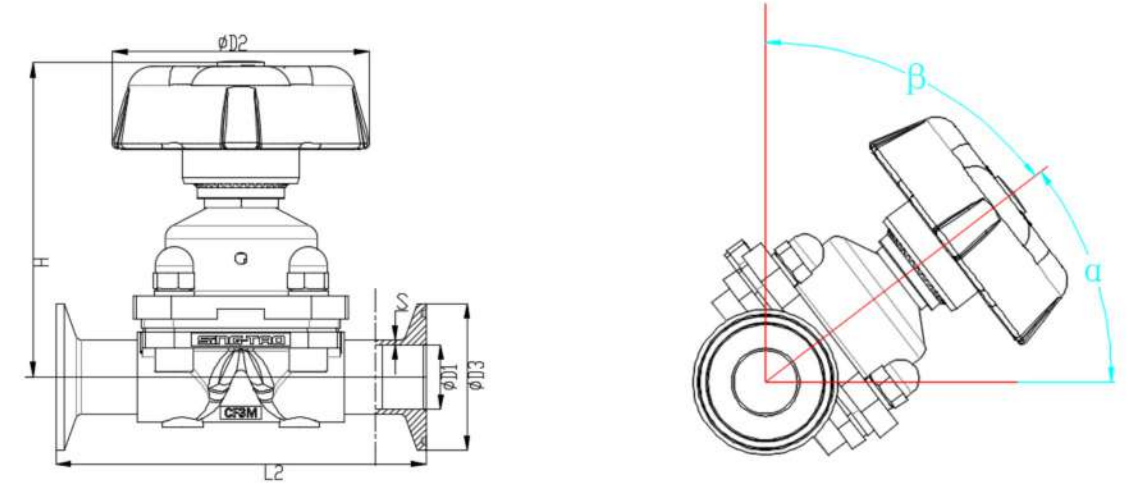
手动焊接阀尺寸和排净角度（中手轮）
Manual welding valve size and discharge angle (middle handwheel)

尺寸 Size	英寸 Inch	L	Lw	ΦD1	S	H	ΦD2	排净角度α Emission angle α	排净角度β Emission angle β
DN20	3/4	108	25	19.1	1.65	89	65	18.5	71.5
DN25	1	120	25	25.4	1.65	108	86	29.5	60.5
DN40	1 1/2	153	30	38.1	1.65	129	108	24	66
DN50	2	173	30	50.8	1.65	150	140	18	72
DN65	2 1/2	173	30	63.5	1.65	154	140	9	81



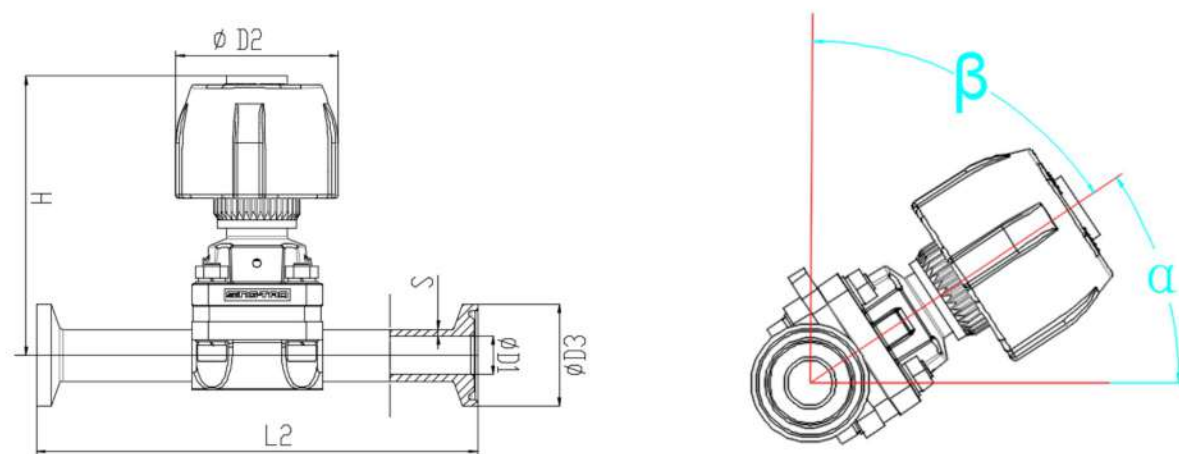
手动焊接阀尺寸和排净角度 (大手轮)
Manual welding valve size and discharge angle (large handwheel)

尺寸 Size	英寸 Inch	L	Lw	ΦD1	S	H	ΦD2	排净角度α Emission angle α	排净角度β Emission angle β
DN80	3	254	23	76.2	1.65	264	214	20.5	69.5
DN100	4	310	24	101.6	2.11	274	214	19.5	70.5



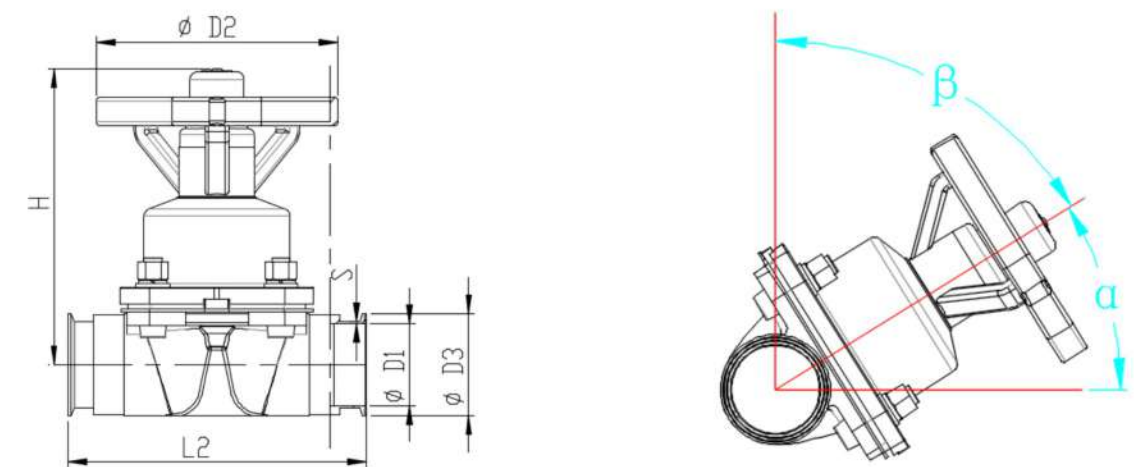
手动卡接阀尺寸和排净角度 (中手轮)
Manual clamp valve size and discharge angle (middle handwheel)

尺寸 Size	英寸 Inch	L2	ΦD1	ΦD3	S	H	ΦD2	排净角度α Emission angle α	排净角度β Emission angle β
DN20	3/4	127	19.1	25	1.65	89	65	18.5	71.5
DN25	1	127	25.4	50.4	1.65	108	86	29.5	60.5
DN40	1 1/2	159	38.1	50.4	1.65	129	108	24	66
DN50	2	190	50.8	63.9	1.65	150	140	18	72
DN65	2 1/2	216	63.5	77.5	1.65	154	140	9	81



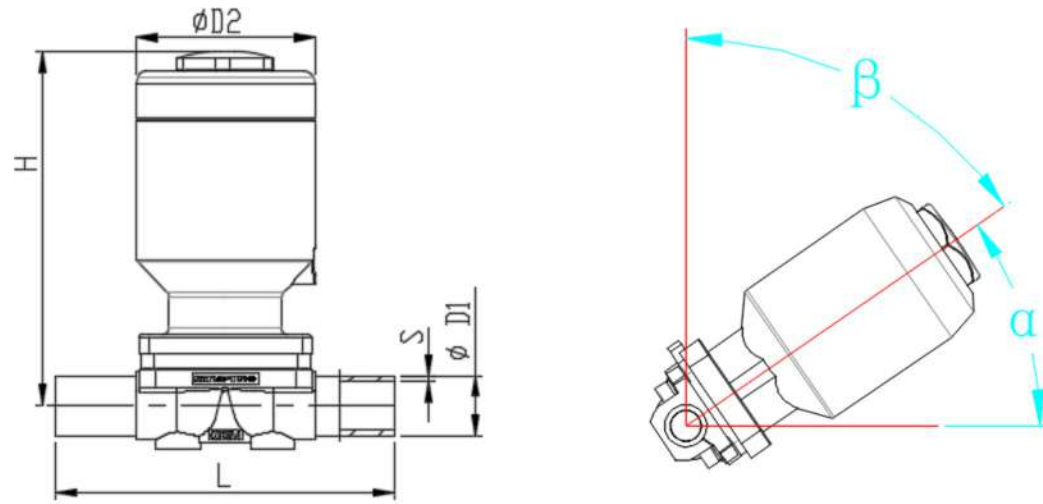
手动卡接阀尺寸和排净角度 (小手轮)
Manual clamp valve size and discharge angle (small handwheel)

尺寸 Size	英寸 Inch	L2	ΦD1	ΦD3	S	H	ΦD2	排净角度α Emission angle α	排净角度β Emission angle β
DN15	1/2	108	12.7	25	1.65	70	40	17	73



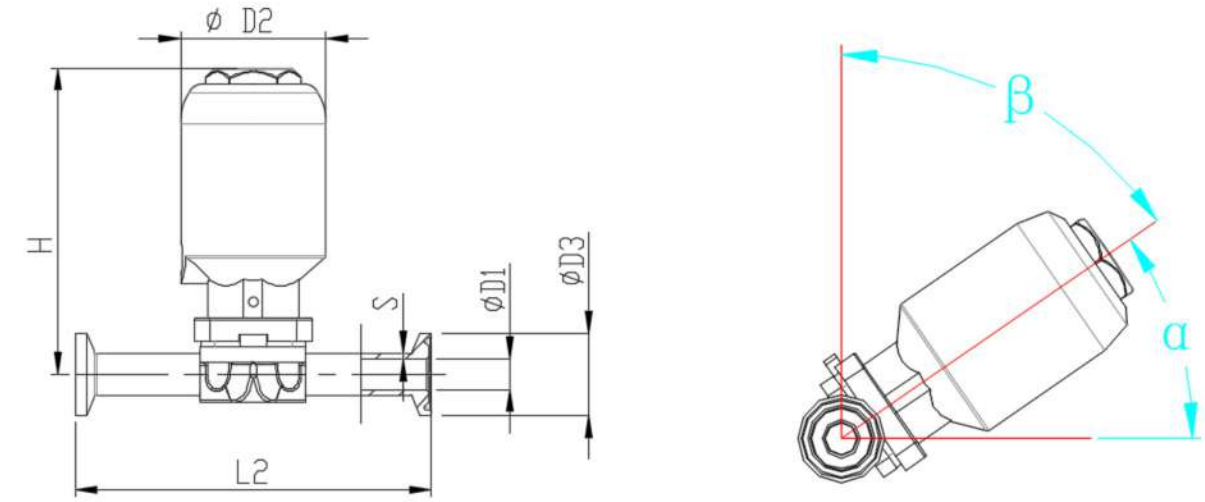
手动卡接阀尺寸和排净角度 (大手轮)
Manual clamp valve size and discharge angle (large handwheel)

尺寸 Size	英寸 Inch	L2	ΦD1	ΦD3	S	H	ΦD2	排净角度α Emission angle α	排净角度β Emission angle β
DN80	3	265	76.2	90.9	1.65	264	214	20.5	69.5



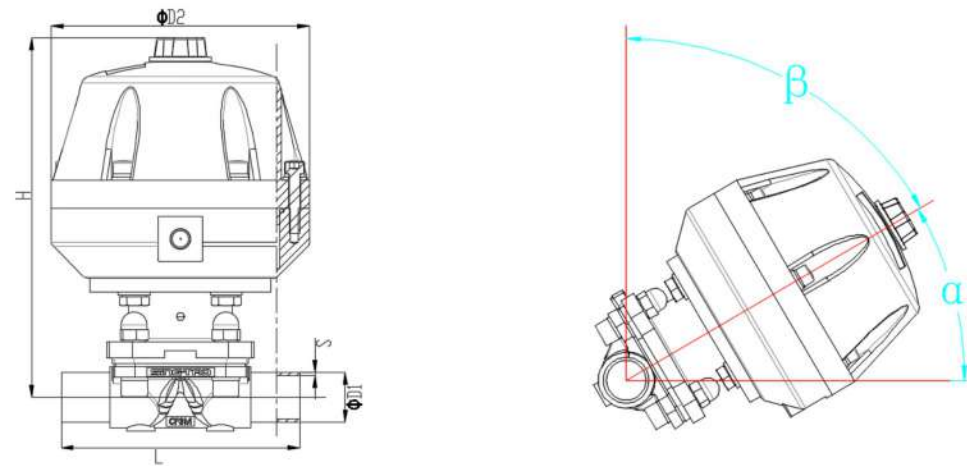
气动焊接阀尺寸和排净角度 (不锈钢执行器)
Dimensions and discharge angle of pneumatic welding valve (stainless steel actuator)

尺寸 Size	英寸 Inch	L	Lw	ΦD1	S	H	ΦD2	排净角度α Emission angle α	排净角度β Emission angle β
DN8	1/4	72	20	6.35	0.89	93	44	30.5	59.5
DN10	3/8	72	20	9.53	0.89	93	44	22	68
DN15	1/2	72	20	12.7	1.65	93	44	17	73
DN20	3/4	108	25	19.1	1.65	113	58	18.5	71.5



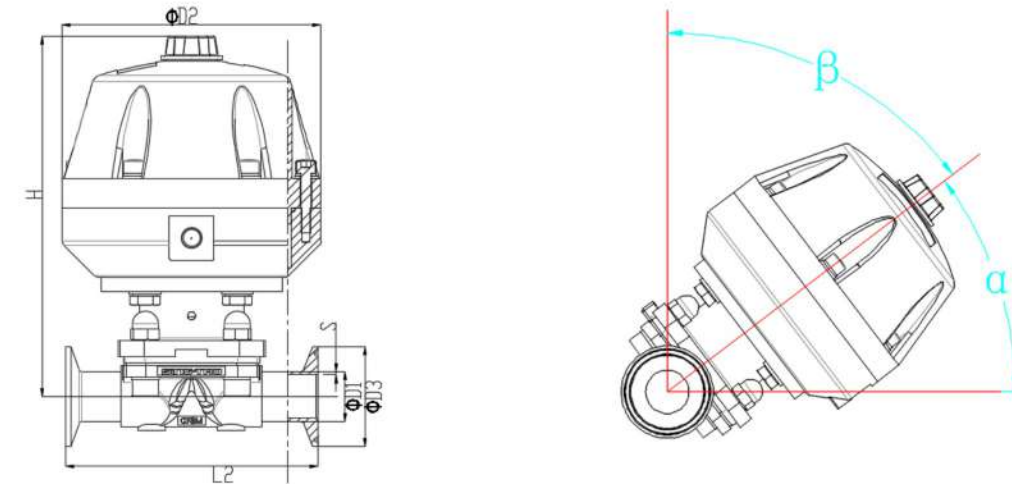
气动卡接阀尺寸和排净角度 (不锈钢执行器)
Dimensions and discharge angle of pneumatic clamp valve (stainless steel actuator)

尺寸 Size	英寸 Inch	L2	ΦD1	ΦD3	S	H	ΦD2	排净角度α Emission angle α	排净角度β Emission angle β
DN15	1/2	108	12.7	25	1.65	93	44	17	73
DN20	3/4	127	19.1	25	1.65	113	58	18.5	71.5



气动焊接阀尺寸和排净角度 (塑料执行器)
Dimensions and discharge angle of pneumatic welding valves (plastic actuator)

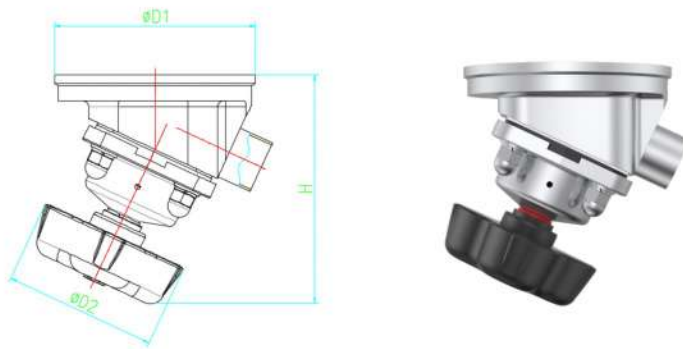
尺寸 Size	英寸 Inch	L	Lw	ΦD1	S	H	ΦD2	排净角度α Emission angle α	排净角度β Emission angle β
DN25	1	120	25	25.4	1.65	182	130	29.5	60.5
DN40	1 1/2	153	30	38.1	1.65	225	162	24	66
DN50	2	173	30	50.8	1.65	252	162	18	72
DN65	2 1/2	173	30	63.5	1.65	257	162	9	81



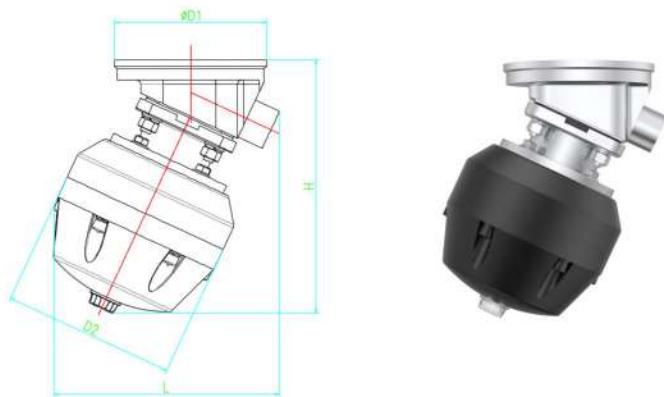
气动卡接阀尺寸和排净角度 (塑料执行器)
Dimensions and discharge angle of pneumatic clamp valve(plastic actuator)

尺寸 Size	英寸 Inch	L2	ΦD1	ΦD3	S	H	ΦD2	排净角度α Emission angle α	排净角度β Emission angle β
DN25	1	127	25.4	50.4	1.65	182	130	29.5	60.5
DN40	1 1/2	159	38.1	50.4	1.65	225	162	24	66
DN50	2	190	50.8	63.9	1.65	252	162	18	72
DN65	2 1/2	216	63.5	77.5	1.65	257	162	9	81

罐底隔膜阀
Tank Bottom diaphragm valve



口径 Caliber	焊接口直径D1/mm Welding joint diameter D1/mm	手轮直径D2/mm Handwheel diameter D2/mm	总高H/mm Total height H/mm
DN15	47	40	73.9
DN20	70	63.2	99.4
DN25	105.5	87.9	133.6
DN40	143.2	108.4	162.7
DN50	169.1	139.1	189.1
DN65	179.7	139.1	194.9
DN80	270	214	214.5



口径 Caliber	焊接口直径D1/mm Welding joint diameter D1/mm	手轮直径D2/mm Handwheel diameter D2/mm	总高H/mm Total height H/mm
DN15	47	45	107
DN20	70	58	127
DN25	105.5	130	193
DN40	143.2	162	239
DN50	169.1	162	265
DN65	179.7	162	272

两通隔膜阀/罐底隔膜阀编码、代号规则
Encoding and coding rules for two-way diaphragm valves/tank bottom diaphragm valves

位号 Tag Number	1	2	3、4	5	6	7	8	9	10	11	12
代码 Code	D	5	15	0	P	6	0	B	F	C	M
特性定义 Property definition	阀门类型 Valve type	控制形式 Control form	口径 Caliber	是否带电子信号反馈 Whether the pneumatic device has a mechanical limit	口径标准 Caliber standard	连接形式 Connection form	气动是否带机械限位 Whether the pneumatic device has a mechanical limit	阀体材质 Body material	隔膜材质 Diaphragm material	其他 Other	抛光 Polishing

位号 Tag Number	代码 Code	阀门类型 Valve type	
1	D	两通隔膜阀 Two way diaphragm valve	
	0	隔膜罐底阀 Diaphragm tank bottom valve	
2	代码 Code	控制形式 Control form	
	2	金属手轮 Metal handwheel	
	7	塑料手轮 Plastic handwheel	
	3	塑料气动头 Plastic pneumatic head	
	5	不锈钢气动头 Stainless steel pneumatic head	
3、4	代码 Code	口径 Caliber	
	08	8	5/16"
	10	10	3/8"
	15	15	1/2"
	20	20	3/4"
	25	25	1"
	32	32	1 1/4"
	40	40	2 1/2"
50	50	2"	
65	65	2 1/2"	

位号 Tag Number	代码 Code	口径 Caliber	
3、4	80	80	3"
	1A	100	4"
5	代码 Code	是否带电子信号反馈 With or without electronic signal feedback	
	0	无 Without	
	A	ST F1 FPos	
	B	ST F2 FPos	
6	代码 Code	口径标准 Caliber standard	
	P	ASME BPE	
	I	ISO 2037	
7	代码 Code	连接形式 Connection form	
	8	卡盘Tri-Clamp	
	6	焊接Weld	
8	代码 Code	气动是否带机械限位 Whether the pneumatic device has a mechanical limit	
	7	卡焊Tri&Weld	
	0	不带限位 Without limit	
	L	带限位器 With limiters	

位号 Tag Number	代码 Code	阀体材质 Body material
9	B	A351 CF3M(铸造316L) A351 CF3M (Cast 316L)
	E	A182 F316L(锻造316L) A182 F316L (Forged 316L)
	F	1.4404 (锻造316L) 1.4404 (Forged 316L)
	G	1.4435 (锻造316L) 1.4435 (Forged 316L)
10	代码 Code	隔膜材质 Diaphragm material
	F	PTFE/EPDM两片式 PTFE/EPDM Two-piece
	O	PTFE/EPDM单片式 PTFE/EPDM Monolithic
	D	EPDM

位号 Tag Number	代码 Code	其他 Other
11	O	气动常开 Pneumatic normally open
	C	气动常闭 Pneumatic normally closed
	Z	手动 Manual
	D	气动常闭+触点位置反馈 Pneumatic normally closed+contact position feedback
	E	气动常开+触点位置反馈 Pneumatic normally open+contact position feedback
12	代码 Code	抛光 Burnishing
	M	机械抛光 Mechanical polishing
	E	电解抛光 Electrolytic polishing
	O	其他 Other



组合隔膜阀是由直通隔膜阀的阀体按照客户的特定要求焊接在一起，不同的组合方位和角度都是为了减少管道上死角管道的长度，原则上都要遵循L/D≤3的要求。

The combined diaphragm valve is welded together by the valve body of the straight diaphragm valve as required specifically by the customer. The different combination azimuth and angles are adopted to reduce the length of the dead angle pipe on the pipeline, but it shall conform to the requirements of L/D≤3 in principle.

**组合形式
Combination form**

主阀水平自排净安装，支阀右侧垂直安装。
The main valve is installed horizontally and in self-exhaustion, and the right side of the branch valve is installed vertically



主阀水平自排净安装，支阀左侧垂直安装。
The main valve is installed horizontally and in self-exhaustion, and the left side of the branch valve is installed vertically.



主阀水平向上安装，支阀右（左）侧垂直安装。
The main valve is installed horizontally and upward, and the right (left) side of the branch valve is installed vertically.



主阀水平自排净安装，支阀左（右）侧水平自排净安装。
The main valve is installed horizontally and in self-exhaustion, and the left (right) side of the branch valve is installed horizontally and in self-exhaustion.

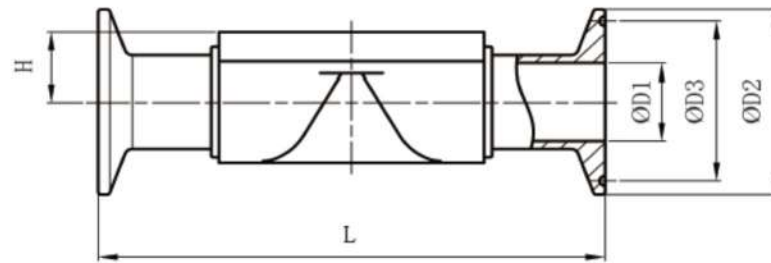


主阀垂直安装，支阀上（下）部水平自排净安装。
The main valve is installed vertically, and the upper (lower) part of the branch valve is installed horizontally and in self-exhaustion.

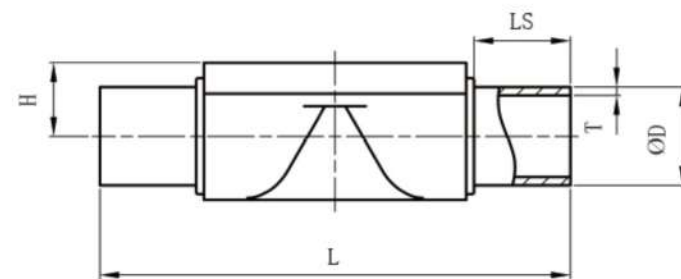


膜片工况说明 Description of diaphragm working conditions			
膜片品类 Membrane category	适用工况 Applicable working conditions		
	介质温度 Medium temperature		蒸汽（灭菌） Steam (Sterilization)
	min.	max.	
PTFE/EPDM 两片式 Two piece type	- 10°C	120°C	持续温度*150°C Continuous temperature * 150 °C
PTFE/EPDM 单片式 Monolithic	- 10°C	120°C	持续温度*150°C Continuous temperature * 150 °C
EPDM	- 10°C	120°C	150°C, 最多持续60分钟 150 °C, Max.60 min

表面光泽度说明 Surface glossiness description		
抛光类型 Polishing type	粗糙度 Roughness	工艺 Technology
机械抛光 Mechanical polishing	Ra≤0.6μm	内表面机械抛光，外表面玻璃珠喷砂 Internal surface mechanical polishing, external surface glass bead sandblasting
电解抛光 Electropolishing	Ra≤0.4μm	内部/外部电解抛光 Internal/external electrolytic polishing
其他 Other	Ra≤0.2μm	内表面机械抛光，外表面玻璃珠喷砂 Internal surface mechanical polishing, external surface glass bead sandblasting

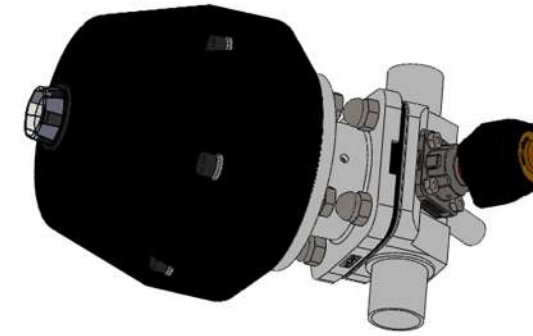


阀体尺寸-卡接 (mm) Body dimensions - clamping (mm)			
DN	NPS	L	H
DN20	3/4"	127	12.5
DN25	1"	127	19
DN40	1 1/2"	159	26
DN50	2"	190	32
DN65	2 1/2"	216	40



阀体尺寸-焊接 (mm) Body dimensions - welding (mm)				
DN	NPS	L	LS	H
DN20	3/4"	108	25	12.5
DN25	1"	120	30	19
DN40	1 1/2"	153	30	26
DN50	2"	173	30	32
DN65	2 1/2"	173	36	40

UniBODY



遵循3D标准, UniBODY阀基于GMP/SAP阀基础上的一种特殊结构形式, 采用集成阀体、阀座, 完美解决SAP焊接阀残留、滞留现象, 大大减小了死角, 并在生产区域内无焊接。

UniBODY阀体有两个阀座和三个管接口, 由锻造毛坯件/块料加工而来, 可用于取样、蒸汽及冷凝工艺。

UniBODY阀的优点: 结构紧凑、重量轻; 3D标准, 垂直安装自排尽; 生产区域无焊接。

Following the 3D standard, the UniBODY valve is a special structural form based on the GMP or SAP valve. It adopts an integrated valve body and seat, perfectly solving the problem of SAP welding valve residue and retention, greatly reducing dead corners, and no welding in the production area.

The UniBODY valve body has two valve seats and three pipe interfaces, which are processed from forged blanks/blocks and can be used for sampling, steam and condensation processes.

Advantages of UniBODY valves: Compact structure and light weight. 3D standard, vertically installed and self draining. No welding in the production area.

GMP/UniBODY阀编码、代号规则 Encoding and coding rules for GMP/UniBODY diaphragm valves

位号 Tag Number	1	2	3, 4	5	6	7	8	9	10	11	12
代码 Code	1	3	20	0	P	G	3	B	F	0	M
特性定义 Property definition	阀门类型 Valve type	控制形式 Control form	口径 Caliber	取样口径公制/mm Sampling caliber metric/mm	口径标准 Caliber standard	连接形式 Connection form	取样控制形式 Sampling control form	阀体材质 Body material	隔膜 Lack of mutual understanding	其他 Other	抛光 Polishing

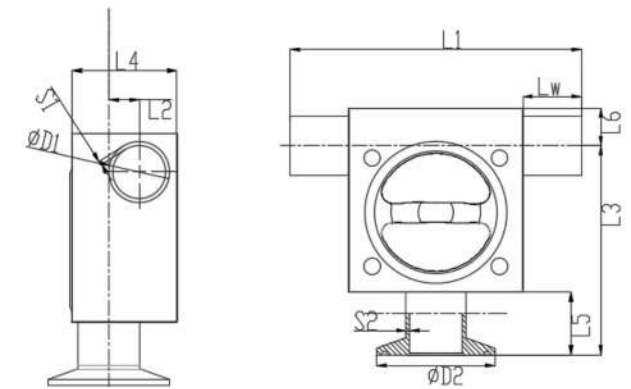
位号 Tag Number	代码 Code	阀门类型 Valve type
1	G	GMP
	I	UniBODY
2	代码 Code	控制形式 Control form
	2	金属手轮 Metal handwheel
	7	塑料手轮 Plastic handwheel
	3	塑料气动头常闭 Plastic pneumatic head normally closed
	5	不锈钢气动头常闭 Stainless steel pneumatic head normally closed
	4	不锈钢气动头常开 Stainless steel pneumatic head normally open
	6	塑料气动头常开 Plastic pneumatic head normally open
3、4	代码 Code	口径 Caliber
	20	20 3/4"
	25	25 1"
	32	32 1 1/4"
	40	40 1 1/2"
	50	50 2"
5	代码 Code	取样口径公制/mm Sampling caliber metric/mm
	B	10
	O	15
6	代码 Code	口径标准 Caliber standard
	P	ASME BPE
	I	ISO 2037
7	代码 Code	连接形式 Connection form
	G	主管焊接、取样焊接 Supervisor welding and sampling welding
	5	主管卡接、取样卡接 Supervisor card connection and sampling card connection
	3	主管卡接、取样焊接 Supervisor card connection and sampling welding
	2	主管焊接、取样卡接 Supervisor welding and sampling card connection
	A	主管卡焊, 取样焊接 Supervisor card welding and sampling welding
	B	主管卡焊, 取样卡接 Supervisor card welding and sampling card connection

位号 Tag Number	代码 Code	取样控制形式 Sampling control form
8	3	塑料手轮 Plastic handwheel
	5	不锈钢气动头常闭 Stainless steel pneumatic head normally closed
	4	不锈钢气动头常开 Stainless steel pneumatic head normally open
9	代码 Code	阀体材质 Body material
	B	A351 CF3M(铸造316L) A351 CF3M (Cast 316L)
	E	A182 F316L(锻造316L) A182 F316L (Forged 316L)
	F	1.4404 (锻造316L) 1.4404 (Forged 316L)
	G	1.4435 (锻造316L) 1.4435 (Forged 316L)
10	代码 Code	隔膜 Lack of mutual understanding
	F	PTFE/EPDM两片式 PTFE/EPDM two-piece
	O	PTFE/EPDM单片式 PTFE/EPDM Monolithic
11	代码 Code	其他 Other
	O	无附件 Without attachments
	F	主阀带位置反馈 Main valve with position feedback
	Q	主阀带限位 Main valve with limit
12	代码 Code	抛光 Burnishing
	M	机械抛光 Mechanical polishing
	E	电解抛光 Electrolytic polishing
	O	其他 Other

T型隔膜阀
T-shaped diaphragm valve

高洁净料液应用中, 应最大限度控制滞留区, 零死角T型阀是最佳选择。该阀的最大特点是一整块不锈钢加工而成, 结构紧凑, 极大减少取样或取水的死角滞留。

In the application of high clean ingredients or dispensing solutions, the retention area should be controlled to the maximum extent, and the zero dead corner T-type diaphragm valve is the best choice. The biggest feature of this valve is that it is made of a whole piece of stainless steel, with a compact structure, greatly reducing dead corners for sampling or water collection.

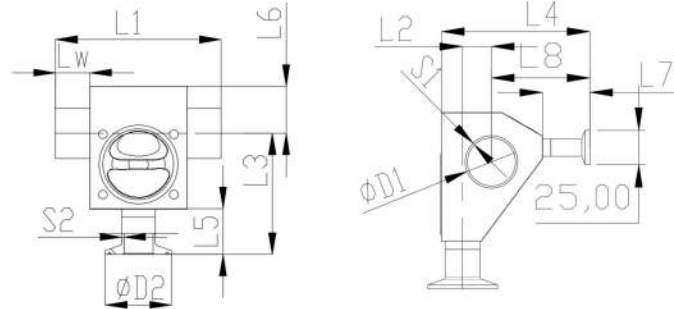


尺寸 Size	英寸 Inch	L1	Lw	L2	L3	L4	L5	L6	ΦD1	S1	ΦD2	S2
DN20/15	0.75"/0.5"	82	25	7.7	77.5	29	34.5	12.4	19.1	1.65	25	1.65
DN20/20	0.75"/0.75"	100	25	6.5	76.6	30.5	34.5	14	19.1	1.65	25	1.65
DN25/15	1"/0.5"	82	25	9.5	69	34	34.5	15.2	25.4	1.65	25	1.65
DN25/20	1"/0.75"	101	25	11.7	81.2	39	34.5	15.8	25.4	1.65	25	1.65
DN25/25	1"/1"	124	25	10.8	96.8	44	34.5	16.1	25.4	1.65	50.4	1.65
DN40/15	1.5"/0.5"	82	25	17.6	75	49	34.5	23	38.1	1.65	25	1.65
DN40/20	1.5"/0.75"	101	25	18.8	89.6	53	34.5	22	38.1	1.65	25	1.65
DN40/25	1.5"/1"	124	25	21	92.5	59	34.5	22.5	38.1	1.65	50.4	1.65
DN40/40	1.5"/1.5"	150	25	14.5	107.5	62	34.5	22.5	38.1	1.65	50.4	1.65
DN50/15	2"/0.5"	92	30	21	79.5	58	34.5	29.5	50.8	1.65	25	1.65
DN50/20	2"/0.75"	111	30	22.5	97	62.5	34.5	29	50.8	1.65	25	1.65
DN50/25	2"/1"	134	30	27	99.5	72	34.5	29.5	50.8	1.65	50.4	1.65
DN50/40	2"/1.5"	160	30	21.7	114.5	75.5	34.5	28	50.8	1.65	50.4	1.65
DN65/15	2.5"/0.5"	92	30	16	83	71	34.5	46.6	63.5	1.65	25	1.65
DN65/20	2.5"/0.75"	111	30	22.8	105	73	34.5	47	63.5	1.65	25	1.65
DN65/25	2.5"/1"	134	30	30.6	106	82	34.5	36.5	63.5	1.65	50.4	1.65
DN65/40	2.5"/1.5"	160	30	28	121.5	89	34.5	35	63.5	1.65	50.4	1.65
DN65/50	2.5"/2"	179	30	25	160	91.5	34.5	35	63.5	1.65	63.9	1.65
DN80/15	3"/0.5"	92	30	34	85	85	34.5	43	76.2	1.65	25	1.65
DN80/20	3"/0.75"	111	30	30	112.5	83	34.5	44	76.2	1.65	25	1.65
DN80/25	3"/1"	134	30	26.5	126	83.5	34.5	46.5	76.2	1.65	50.4	1.65
DN80/40	3"/1.5"	160	30	26.5	138	93	34.5	42	76.2	1.65	50.4	1.65
DN80/50	3"/2"	179	30	20	159	94	34.5	42	76.2	1.65	63.9	1.65
DN80/65	3"/2.5"	179	30	18.5	154	97	34.5	42	76.2	1.65	77.5	1.65

T型隔膜阀+back隔膜阀取样
T-shaped diaphragm valve+back diaphragm valve sampling

我们不推荐当T型隔膜阀结合取样时，通过焊接小规格的两通隔膜阀而实现，因为这不可避免产生存液。星岛推出一体锻造T型隔膜阀+BACK隔膜阀用于实现取样功能，极大解决了焊接隔膜阀存液问题，做到真正的零死角。

We do not recommend that when the T-type diaphragm valve combines sampling, by welding the small size two-way diaphragm valve, because this inevitably produces liquid storage. SingTao Launch the integrated forging T diaphragm valve with diaphragm valve to achieve sampling function, greatly solve the problem of welding two-way diaphragm valve liquid storage, to achieve a real zero liquid storage.

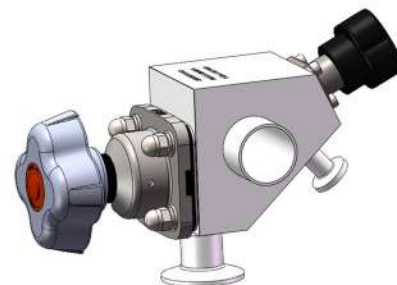


尺寸 Size	英寸 Inch	L1	LW	L2	L3	L4	L5	L6	L7	L8	ØD1	S1	ØD2	S2
DN25/20/15	1"/0.75"/0.5"	101	25	12.5	77.5	91.5	34.5	28	34.5	67.5	25.4	1.65	25	1.65
DN40/20/15	1.5"/0.75"/0.5"	101	25	19.5	89.6	103.5	34.5	33.9	34.5	72.5	38.1	1.65	25	1.65
DN40/25/15	1.5"/1"/0.5"	124	25	21	92	114	34.5	36	34.5	71.6	38.1	1.65	50.4	1.65
DN50/20/15	2"/0.75"/0.5"	111	30	22.3	97	118	34.5	36.5	34.5	84.5	50.8	1.65	25	1.65
DN50/25/15	2"/1"/0.5"	134	30	26.8	99	121	34.5	38	34.5	78.8	50.8	1.65	50.4	1.65
DN50/40/15	2"/1.5"/0.5"	160	30	21.7	114.5	124.5	34.5	39	34.5	77.8	50.8	1.65	50.4	1.65
DN65/20/15	2.5"/0.75"/0.5"	111	30	26.5	104.8	122	34.5	42.3	34.5	83.8	63.5	1.65	25	1.65
DN65/25/15	2.5"/1"/0.5"	134	30	31.8	105.6	130.5	34.5	43	34.5	83.5	63.5	1.65	50.4	1.65
DN65/40/15	2.5"/1.5"/0.5"	160	30	30	120	138	34.5	42.5	34.5	83.5	63.5	1.65	50.4	1.65
DN65/50/15	2.5"/2"/0.5"	179	30	24	130.5	139.5	34.5	42.8	34.5	83	63.5	1.65	63.9	1.65
DN80/20/15	3"/0.75"/0.5"	111	30	30.5	104.5	123.5	34.5	53	34.5	80.9	76.2	1.65	25	1.65
DN80/25/15	3"/1"/0.5"	134	30	33	115	130	34.5	53	34.5	80.9	76.2	1.65	50.4	1.65
DN80/40/15	3"/1.5"/0.5"	160	30	33	130.6	139	34.5	53	34.5	80.9	76.2	1.65	50.4	1.65
DN80/50/15	3"/2"/0.5"	179	30	29.8	141	142	34.5	53	34.5	80.9	76.2	1.65	63.9	1.65
DN80/65/15	3"/2.5"/0.5"	179	30	23.5	141	142	34.5	53	34.5	80.9	76.2	1.65	77.5	1.65

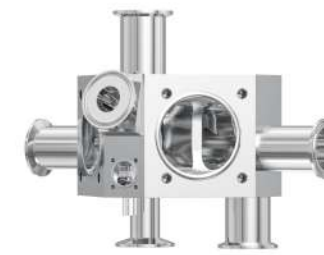
T型隔膜阀+柱塞阀取样
T-shaped diaphragm valve+plunger valve sampling

星岛创新地将卫生取样阀集成到T型阀上，真正实现了取样前无存液量、无死角，取样后无残留。

SingTao innovatively integrates sanitary sampling valves into T-valves, truly achieving and no liquid storage after sampling, no dead corners, no residue before sampling.



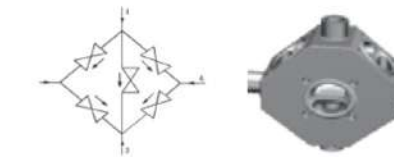
带灭菌口的T型阀 T-valve with sterilization port



集成化的GMP阀 Integrated GMP valve



多通道阀 Multichannel valve



阀体尺寸-卡接 (mm)
Body dimensions - clamping (mm)

项目 Item	数据 Data
工作压力 Working pressure	0-10bar, 145psi (EPDM+PTFE)
工作温度 Working temperature	-10°C-150°C, SIP max150°C
驱动方式 Drive mode	手动/气动 Manual/pneumatic
阀体材质 Valve body material	1.4404 (316L), 锻块 1.4404(316L), forging block
表面处理 Surface treatment	外表面喷砂, 内表面Ra≤0.375um (SF4) Outer surface sandblasting, inner surface Ra≤0.375um (SF4)
连接方式 Connection mode	焊式ASME BPE, 3A Welding ASME BPE, 3A

定制隔膜阀编码、代号规则
Customized diaphragm valve coding and coding rules

(隔膜罐底阀带取样、隔膜罐底阀带消毒、T型阀、T型阀带隔膜取样、T型阀带柱塞取样、多通道阀)
(Diaphragm tank bottom valve with sampling, diaphragm tank bottom valve with disinfection, T-valve, T-valve with diaphragm sampling, T-valve with plunger sampling, multi-channel valve)

位号 Tag Number	1	2	3, 4	5	6	7	8	9	10	11	12	13	14
代码 Code	Q	3	20	0	0	P	A	3	7	E	F	Z	E
特性定义 Property definition	阀门类型 Valve type	主阀控制形式 Main valve control form	口径 Caliber	副管口径 Auxiliary pipe diameter	副阀控制形式 Auxiliary valve control form	标准类别 Standard category	连接形式 Connection form	取样口径 Sampling caliber	取样控制形式 Sampling control form	阀体材料 Material	隔膜材质 Diaphragm material	其他 Other	抛光 Polishing

位号 Tag Number	代码 Code	阀门类型 valve type
1	M	多通道 Multi-channel
	T	T型阀 T-shaped valve
	U	T型阀带取样 T-shaped valve with sampling
	Z	T型阀带柱塞取样 T-shaped valve with plunger sampling
	Q	罐底阀带取样 Tank bottom valve with sampling
	R	罐底阀带消毒 Tank bottom valve with disinfection
2	代码 Code	主阀控制形式 Main valve control form
	2	金属手轮 Metal handwheel
	7	塑料手轮 Plastic handwheel
	3	塑料气动头常闭 Plastic pneumatic head normally closed
	5	不锈钢气动头常闭 Stainless steel pneumatic head normally closed
	4	不锈钢气动头常开 Stainless steel pneumatic head normally open
	6	塑料气动头常开 Plastic pneumatic head normally open

位号 Tag Number	代码 Code	口径 Caliber
3, 4	20	20
	25	25
	32	32
	40	40
	50	50
	65	65
	80	80
	1A	100
5	代码 Code	副管口径 Auxiliary pipe diameter
	0	无 Without
	C	15
	D	20
	E	25
	F	32
	G	40
	H	50
	I	65
	J	80
	0	无 Without
	C	15
D	20	
E	25	
F	32	
G	40	
H	50	

位号 Tag Number	代码 Code	副管口径 Auxiliary pipe diameter
5	I	65
	J	80
6	代码 Code	副阀控制形式 Auxiliary valve control form
	0	无 Without
	2	金属手轮 Metal handwheel
	7	塑料手轮 Plastic handwheel
	3	塑料气动头常闭 Plastic pneumatic head normally closed
	5	不锈钢气动头常闭 Stainless steel pneumatic head normally closed
	4	不锈钢气动头常开 Stainless steel pneumatic head normally open
	6	塑料气动头常开 Plastic pneumatic head normally open
7	代码 Code	标准类别 Standard category
	P	ASME BPE
	I	ISO 2037
8	代码 Code	连接形式 Connection form
	2	罐底阀体, 接口焊接 Tank bottom valve body, interface welding
	1	罐底阀体, 接口卡接 Tank bottom valve body, interface card connection
	3	罐底阀体, 出口卡接, 取样焊接 Tank bottom valve body, outlet clamp, sampling welding
	A	T型主/副管焊接 T-shaped main/auxiliary pipe welding
	B	T型主/副管卡接 T-shaped main/auxiliary pipe clamp
	C	T型主管卡接, 副管焊接 T-shaped main pipe clamp, secondary pipe welding
	D	T型主管焊接, 副管卡接 T-shaped main pipe welding, secondary pipe clamping
	4	T型+取样主/副管焊接, 取样焊接 T-shaped+sampling main/secondary pipe welding sampling welding
	5	T型+取样主/副管卡接, 取样卡接 T-shaped+sampling main/secondary pipe clamp sampling clamp
	6	T型+取样主/副管卡接, 取样焊接 T-shaped+sampling main/secondary pipe clamp sampling welding
	7	T型+取样主/副管焊接, 取样卡接 T-shaped+sampling main/secondary pipe welding sampling clamp connection
8	T型+取样主管焊接, 副管卡接, 取样卡接 T-shaped+sampling main pipe welding, secondary pipe clamping, sampling clamping	
9	T型+取样主管焊接, 副管卡接, 取样焊接 T-shaped+sampling main pipe welding, secondary pipe clamping, sampling welding	
E	多通道卡接 Multi channel card connection	

位号 Tag Number	代码 Code	取样口径 Sampling caliber
9	0	无 Without
	2	DN10
	3	DN15
10	代码 Code	取样控制形式 Sampling control form
	0	无 Without
	7	塑料手轮 Plastic handwheel
	5	不锈钢气动头常闭 Stainless steel pneumatic head normally closed
	4	不锈钢气动头常开 Stainless steel pneumatic head normally open
11	代码 Code	阀体材料 Material
	E	A182 F316L(锻造316L) A182 F316L (Forged 316L)
	F	1.4404 (锻造316L) 1.4404 (Forged 316L)
	G	1.4435 (锻造316L) 1.4435 (Forged 316L)
12	代码 Code	隔膜材质 Diaphragm material
	F	PTFE/EPDM两片式 PTFE/EPDM Two-piece
	O	PTFE/EPDM单片式 PTFE/EPDM Monolithic
	D	EPDM
13	代码 Code	其他 Other
	Z	不带附件 Without attachments
	P	带定位器 With locator
	A	带位置反馈器ST F1 FPos ST F1 FPos with position feedback device
14	代码 Code	抛光 Burnishing
	M	机械抛光 Mechanical polishing
	E	电解抛光 Electrolytic polishing
	O	其他 Other

星岛隔膜阀可以直接与以下辅件搭配使用
SingTao diaphragm valve can be used directly
with the following accessories



定位器、位置反馈器
Positioner, position feedback device

- 星岛智能调节定位器，是基于微处理器的阀门开度调节；
SingTao intelligent adjustment locator is a microprocessor based valve opening adjustment.
- 阀门开度通过输入信号设定，运用先进的算法和 PWM 控制技术，可快速而精准地调节开度，从而控制管路中介质的流量；
The valve opening is set through input signals and advanced algorithms and PWM control technology can be used to quickly and accurately adjust the opening, thereby controlling the flow rate of the medium in the pipeline.
- 同时配置信号反馈接口，可实时将阀门的开度情况反馈给终端控制室；
Simultaneously configuring a signal feedback interface, which can provide real-time feedback on the valve opening situation to the terminal control room.
- 可搭配隔膜阀、角座阀组合使用。
Can be used in combination with diaphragm valves and angle seat valves.



ST F1 FPos 触点式位置反馈器
ST F1 FPos contact type position feedback device



ST F1 FPos是一款触点式位置反馈器，应用于直行程气动阀的位置信号反馈，具有可视光指示和电信号反馈，通过可选模式接线，可将阀门的开、关信号，远程反馈至终端控制室或PLC。

ST F1 FPos可与SingTao隔膜阀、角座阀系列阀门配套使用。

ST F1 FPos is a contact type position feedback device used for position signal feedback of straight stroke pneumatic valves. It has visual light indication and electrical signal feedback. Through optional mode wiring, the opening and closing signals of the valve can be remotely fed back to the terminal control room or PLC.

ST F1 FPos can be used in conjunction with SingTao diaphragm valves and angle seat valve series valves.

工作环境温度：-10℃-80℃ Operating ambient temperature: -10℃-80℃	电器参数：24V/DC，单个回路电流Max：400mA Electrical parameters: 24V/DC, single circuit current Max: 400mA
防护等级：IP66 Degree of protection: 1P66	多模式：1、三线实现双反馈（灯亮） Multi-mode: 1.Three-wire double feedback (light on)
目视：绿灯亮（阀门关闭），红灯亮（阀门开启） Visual: Green light indicates valve closing, red light indicates valve opening	2、四线实现双反馈（灯亮） 2. Four-wire double feedback (light on)

ST F2 FPos 智能感应式位置反馈器
ST F2 FPos Intelligent Inductive Position Feedback Device



ST F2 FPos是一款智能感应式位置反馈器，应用于直行程气动阀的位置信号反馈，具有可视光指示和电信号反馈，通过标准的电缆接头，将阀门的开、关信号，远程反馈至终端控制室或PLC。

ST F2 FPos可与SingTao隔膜阀、角座阀系列阀门配套使用。

ST F2 FPos is an intelligent induction position feedback device used for position signal feedback of straight stroke pneumatic valves. It has visual light indication and electrical signal feedback. Through standard cable joints, the opening and closing signals of the valve are remotely fed back to the terminal control room or PLC.

ST F2 FPos can be used in conjunction with SingTao diaphragm valves and angle seat valve series valves.

目视：绿灯亮（阀门开启），黄灯亮（阀门关闭），红灯亮（故障） Visual inspection: Green light on (valve open), yellow light on (valve closed), red light on (fault)
开关类型：电子位置感应式 Switch type: Electronic position sensing
连接形式：电缆密封接头 Connection form: Cable sealing joint
特点：连接更简便，调试、设置简单，相比触点式，更防震、抗震，故障率低 Features: Easier connection, simple debugging and setting, compared to contact type, more shock-absorbing and shock-absorbing, with low failure rate

柱塞式罐底阀 PLUNGER TANK BOTTOM VALVE



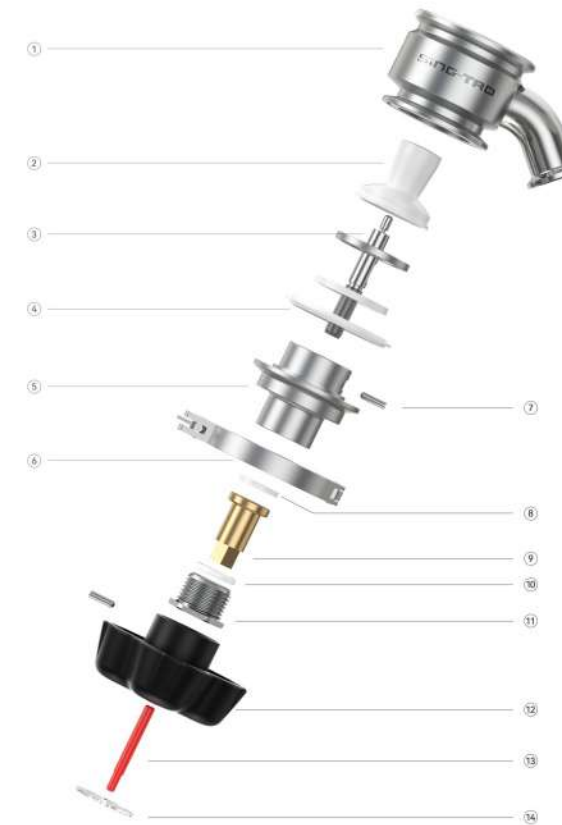
卫生级罐底阀安装在容器底部，无死角可自动排空，广泛用于发酵罐、配料罐、清洗罐等罐体设备，解决了晶体及固体沉淀物因出料直管过长而堵塞及不能完全搅拌均匀的现象。

特点：结构紧凑，可以确保在狭小的空间内实现安装；无死角，可自动排空。阀体由整块材料精加工而成；满足CIP和SIP，阀体内表面Ra≤0.38μm；有限元仿真设计，流量大、无湍流；焊接直径小，可满足小罐体狭小的焊接空间。

Sanitary tank bottom valve is installed at the bottom of the container, without dead angle and automatic emptying, which is widely used in fermentation tank, batching tank, cleaning tank and other tank equipment, solving the phenomenon that the crystal and solid sediment are blocked and cannot be completely stirred evenly due to too long straight discharge pipe.

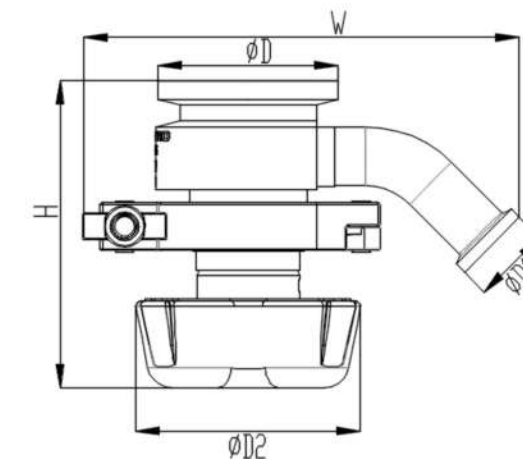
Features: With compact structure, it can ensure installation in a small space. It is without dead angle and can be automatically emptied. The valve body is finished by one piece of material. It can meet SIP or CIP and can be sterilized at high temperature, and the internal surface of the body with roughness up to Ra≤0.38μm. It is designed as a finite element simulation, with large flow and no turbulence. It is easy for welding design and reduces the welding difficulty of tank bottom. The welding diameter is small, which can meet the narrow welding space of the small tank.

尺寸范围：(出口)DN20-DN65 (3/4"-2 1/2") Dimension range: (Outlet) DN20 - DN65 (3/4"-2 1/2")	阀体材质：316L Body material: 316L
工作温度：-10°C-150°C Working temperature: -10°C-150°C	接口形式：卡盘 Interface form: Clamp
压力等级：10bar Pressure rating: 10bar	设计标准：ASME BPE、3A Standard: ASME BPE and 3A
驱动方式：手动、气动 Drive mode: Manual and pneumatic	

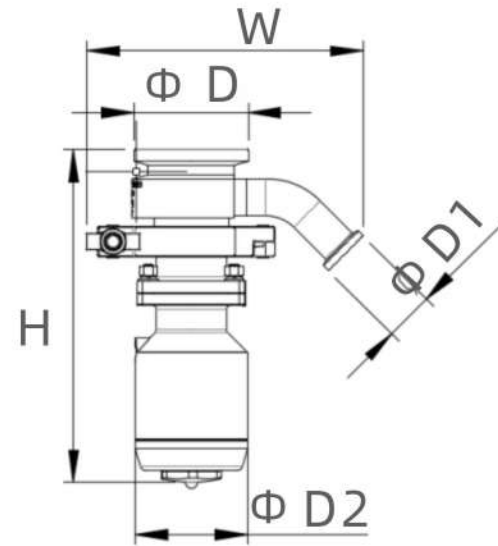


编号 No.	描述 Description	材质 (EN) Material (EN)
1	阀体 Valve body	A182 F316L
2	阀瓣 Valve clack	PTFE
3	阀杆 Valve stem	A182 F304/F316L
4	垫片 Gasket	PTFE
5	阀盖 Valve cover	A276 304/316L
6	卡箍 Clamps	A276 304
7	防转螺钉 Anti-rotation screws	A193 B8
8	减摩垫 Anti-friction pads	PTFE
9	阀杆螺母 Valve rod nut	T3
10	减摩垫 Anti-friction pads	PTFE
11	压盖螺母 Nut gland	A276 304/316L
12	手轮 Handwheel	NYLON
13	指示杆 Indicator rod	NYLON
14	手轮盖板 Handwheel cover plate	PMMA

外部尺寸图 External Dimensional Drawing



尺寸 Size	英寸 Inch	ΦD	ΦD1	ΦD2	W	H
DN20	3/4	58	25	88	140	99
DN25	1	73	50.4	88	163	115
DN40	1 1/2 "	86	50.4	108	203	136
DN50	2	108	63.9	108	209	150
DN65	2 1/2 "	122	77.5	108	243	168



尺寸 Size	英寸 Inch	ΦD	ΦD1	ΦD2	W	H
DN20	3/4	58	25	57.5	140	168
DN25	1	73	50.4	89	163	197
DN40	1 1/2"	86	50.4	138	203	274
DN50	2	108	63.9	138	209	293
DN65	2 1/2"	122	77.5	138	243	302

星岛柱塞式罐底阀，可根据客户需求定制CIP/SIP方案
SingTao plunger type tank bottom valve, can customize CIP/SIP solutions according to customer needs



柱塞式罐底阀编码、代号规则
Encoding and coding rules for Plunger Tank bottom valves

位号 Tag Number	1	2	3、4	5	6	7	8	9	10	11
代码 Code	P	2	20	A	P	S	E	F	0	M
特性定义 Property definition	阀门类型 Valve type	控制形式 Control form	口径 Caliber	产品流道 Product flow channel	口径标准 Caliber standard	连接形式 Connection form	阀体材质 Body material	密封材质 Sealing material	其他 Other	抛光 Polishing

位号 Tag Number	代码 Code	阀门类型 Valve type
1	P	柱塞罐底阀 Plunger tank bottom valve
2	代码 Code	控制形式 Control form
	1	塑胶手轮 Plastic handwheel
3、4	代码 Code	口径 Caliber
	20	20 3/4"
	25	25 1"
	40	40 1 1/2"
	50	50 2"
5	代码 Code	产品流道 Main valve control form
	A	单口 Single port
6	代码 Code	口径标准 Caliber standard
	P	ASME BPE
	I	ISO 2037

位号 Tag Number	代码 Code	连接形式 Connection form
7	S	卡盘 Chuck
8	代码 Code	阀体材质 Body material
	E	A182 F316L(锻造316L) A182 F316L (Forged 316L)
9	代码 Code	密封材质 Sealing material
	F	PTFE
10	代码 Code	其他 Other
	0	无附件 Without attachments
	F	主阀带位置反馈 Main valve with position feedback
11	代码 Code	抛光 Burnishing
	M	机械抛光 Mechanical polishing
	E	电解抛光 Electrolytic polishing
	Q	主阀带限位 Main valve with limit

取样阀 SAMPLING VALVE



三通式取样阀
Three-way sampling valve



二通式取样阀
Two-way sampling valve

无菌型取样阀具有完全意义上的零死角，在每一次取样操作之前和之后实现无拆卸的CIP、SIP，应用于：生物医药等行业。完全无死角，杀菌彻底、物料直接用隔膜来密封、杜绝二次污染，大批取样，微量取样均可、可用蒸汽进行原位消毒、取样典型，重复性好。

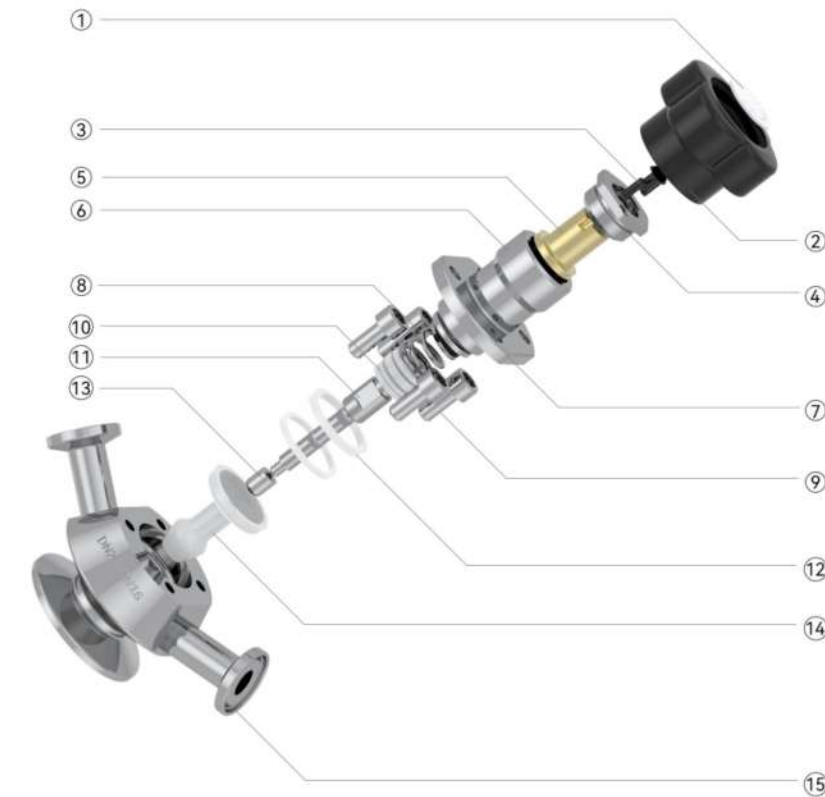
侧面安装时，可完全排净、内部结构无死角、无残留设计、紧凑型设计，操作方便、耐受高温、高压灭菌、满足于 CIP 和 SIP。

Sterile sampling valves with fully zero dead angle can achieve a disassembled CIP and SIP before and after each sampling, which is applied to biomedicine and other industries.

No dead angles and thorough sterilization. Materials are sealed directly by the diaphragm. Secondary pollution can be eliminated, and it is applicable to both bulk sampling and micro-sampling. Steam can be used for in situ disinfection. The sample is typical with good repeatability.

Completely drained for side mounting. Internal structure with no dead area and no residue design. Compact design and easy operation. Resistant to high temperature and autoclaved sterilization. Applicable to CIP and SIP

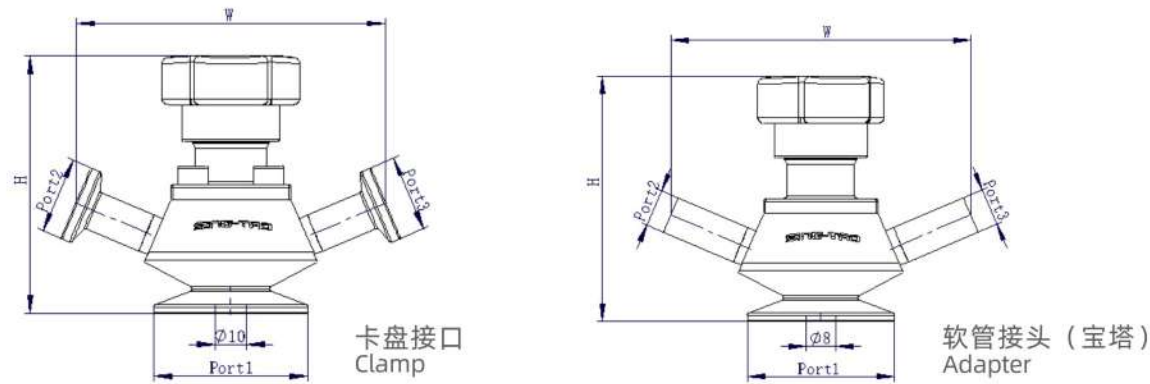
取样口径: DN15 (1/2") Sampling range: DN15 (1/2")	阀座材质: PTFE Seat material: PTFE
卡盘尺寸: DN20-DN25(3/4" -1") Dimension range: (Outlet) DN20 - DN25 (3/4" -1")	阀体材质: F316L/1.4404/1.4435 Body material: F316L/1.4404/1.4435
工作温度: -10°C-150°C Working temperature: -10°C-150°C	接口形式: 弯头、卡盘、软管接头 Interface form: Elbow pipe, clamp and adapter
压力等级: 10bar Pressure rating: 10bar	设计标准: ASME BPE、3A Standard: ASME BPE and 3A
驱动方式: 手动 Drive mode: Manual	



编号 No.	描述 Description	材质 (EN) Material (EN)
1	铭牌 Nameplate	Si
2	手轮 Handwheel	Nylon
3	螺丝 Screw	A193 B8/8M
4	杆母压套 Stem nut pressure sleeve	304/316L
5	杆母 Stem nut	304/316L
6	阀盖 Valve cover	304/316L
7	压套 Pressure sleeve	304/316L
8	弹簧 Spring	304
9	螺栓 Bolt	A193 B8
10	密封填料 Gland packing	PTFE
11	阀杆 Valve rod	304/316L
12	密封环 Sealing ring	PTFE
13	紧锁螺母 Locknut	A194 8/8M
14	阀瓣 Valve clack	PTFE
15	阀体 Valve body	F316L/1.4404

外形尺寸图
Outline dimension diagram

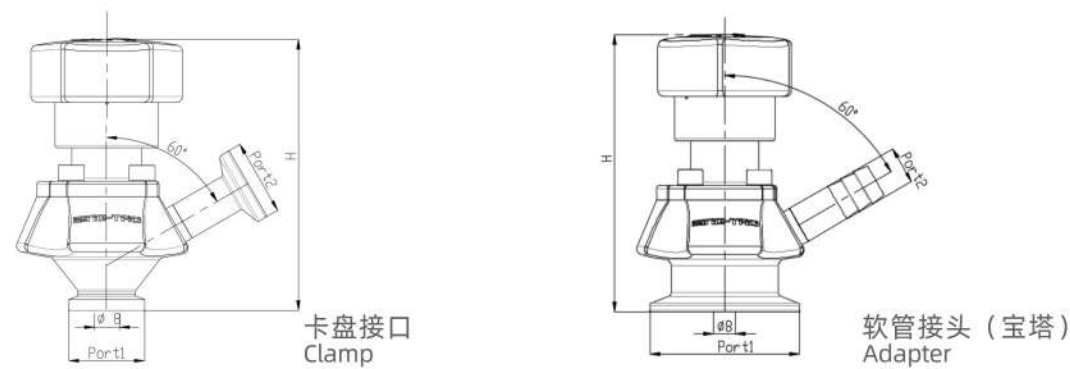
三通式取样阀
Three-way sampling valve



ASME BPE					
尺寸 Dimension	H	W	Port1	Port2	Port3
DN20/15	90	80	25	25	25
DN25/15	90	80	50.4	25	25

ASME BPE					
尺寸 Dimension	H	W	PORT1	Port2	Port3
DN20/15	90	80	25	12.7x1.65	12.7x1.65
DN25/15	90	80	50.4	12.7x1.65	12.7x1.65

二通式取样阀
Two-way sampling valve



ASME BPE			
尺寸 Dimension	H	Port1	Port2
DN20/15	90	25	25
DN25/15	90	50.4	25

ASME BPE			
尺寸 Dimension	H	Port1	Port2
DN20/15	90	25	12.7x1.65
DN25/15	90	50.4	12.7x1.65

无菌取样阀编码、代号规则
Code and coding rules for sterile sampling valves

位号 Tag Number	1	2	3、4	5	6	7	8	9	10
代码 Code	S	1	25	A	P	S	E	F	M
特性定义 Property definition	阀门类型 Valve type	控制形式 Control form	口径 Caliber	产品流道 Product flow channel	口径标准 Caliber standard	出口形式 Export form	阀体材质 Body material	密封材质 Sealing material	抛光 Polishing

位号 Tag Number	代码 Code	阀门类型 Valve type
1	S	取样阀 Sampling valve
	代码 Code	控制形式 Control form
2	1	塑胶手轮 Plastic handwheel
	2	金属拉杆 Metal pull rod
3、4	代码 Code	口径 Caliber
	20	20/15 3/4"
	25	25/15 1"
5	代码 Code	产品流道 Product flow channel
	A	单口 Single port
	B	双口 Double mouth
6	代码 Code	口径标准 Caliber standard
	P	ASME BPE
	I	ISO 2037

位号 Tag Number	代码 Code	出口形式 Export form
7	S	卡盘 Chuck
	W	宝塔 Pagoda
	E	弯头 Elbow
8	代码 Code	阀体材质 Body material
	E	A182 F316L(锻造316L) A182 F316L (Forged 316L)
	F	锻造1.4404 Forging 1.4404
9	代码 Code	密封材质 Sealing material
	F	PTFE
10	代码 Code	抛光 Burnishing
	M	机械抛光 Mechanical polishing
	E	电解抛光 Electrolytic polishing
	O	其他 Other

疏水阀 DRAIN VALVE

热静力式疏水阀
Thermostatic drain valve

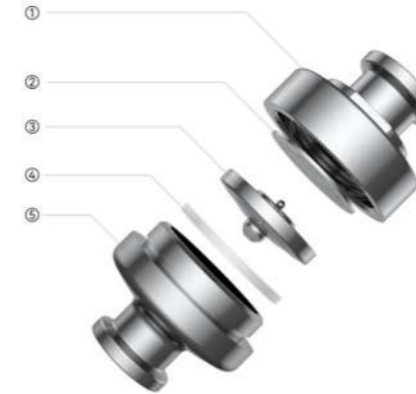


优势和特点 Advantages and features

疏水阀的内部设计能够防止腐蚀和细菌滋生。所有部件为不锈钢制成。X-元件排放不饱和蒸汽并且快速排放低温空气和冷凝水。加快饱和蒸汽进入换热设备，缩短开机时间。产品达到卫生级水平要求。可用于小型反应釜、消毒器和洁净蒸汽系统支管上。冷凝水自由穿流，真正意义上的无缝、无死角设计，最大程度抑制细菌集结；“故障常开”的特性确保蒸汽空间内无冷凝水积存；大开口的阀座孔径设计可迅速排放大量空气、确保快速启动、防止堵塞、确保连续运行；结构紧凑、安装便捷，降低维护成本；电解抛光Ra小于等于0.4、有效防止细菌的滋生。

The corrosion and bacterial growth can be prevented due to internal design of drain valve. All parts are made of stainless steel. The X-element discharges unsaturated steam and rapidly discharges cold air and condensed water. The saturated steam is quicker to enter into the heat exchange equipment, shortening the boot time. The products meet the requirements of sanitary level. It can be used in small reaction still, sterilizer and branch pipe of clean steam system. The condensation water runs through freely, realizing the seamless and no dead angle design in the real sense, which can inhibit bacterial assembly to the maximum extent. It can be ensured that there is no condensate accumulation in the steam space due to the feature of "fault normally open". The valve seat aperture is designed as large opening, which can quickly discharge a large number of air, ensure quick start, prevent clogging and ensure continuous operation. With compact structure, convenient installation and reduction in maintenance costs. Internal electrochemical polishing to Ra0.4um effectively prevent the breeding of bacteria.

圆柱型热静力疏水阀 Cylindrical thermostatic drain valve



*X-元件过冷度15°C以内。也可以根据客户现场工况的需求，提供过冷度5°C以内的X-元件。

*表面处理：内表面抛光Ra≤0.6μm，电解抛光Ra≤0.4μm。

*X- element undercooling degree within 15°C. The X- element with undercooling degree within 5°C can also be provided requirements of customers' field conditions.

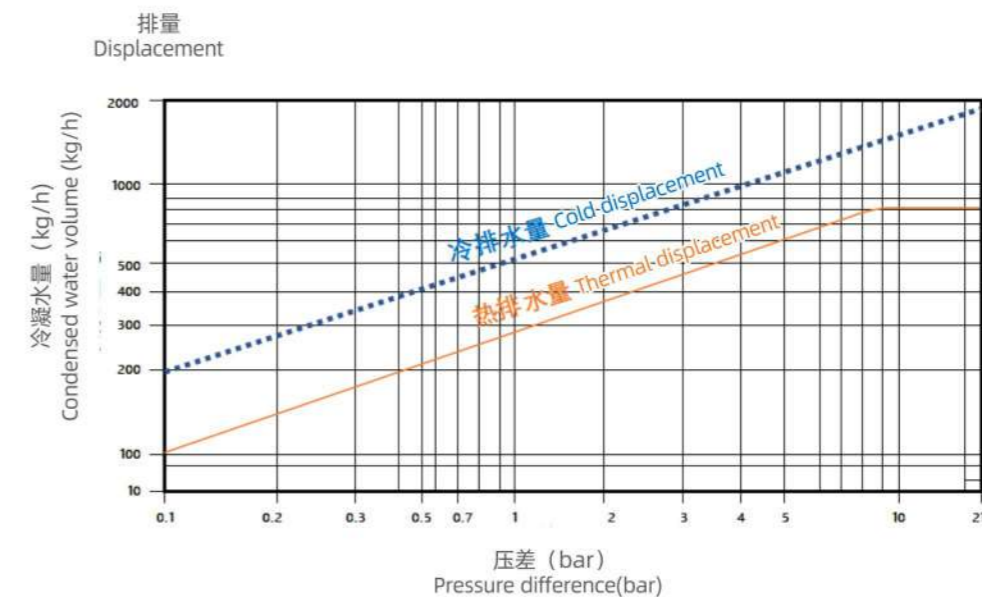
*Surface treatment: Inner surface finish polishing to Ra≤0.6μm and electrolytic polishing to Ra≤0.4μm.

序号 S/N	名称 Name	材质 Materials
1	上阀体 Upper valve body	316L
2	过滤网 Filter screen	316L
3	X-元件 X-element	316L
4	密封垫片 Sealing gasket	316L
5	下阀体 Lower valve body	316L

尺寸范围: DN15-DN25 (1/2" -1") Dimension range: DN15-DN25 (1/2" -1")	阀体材质: 316L Body material: 316L
工作温度: 0°C-200°C Working temperature: 0°C-200°C	接口形式: 卡盘/NPT Interface form: Clamp/NPT
压力等级: 16bar Pressure rating: 16bar	设计标准: ASME BPE、3A Standard: ASME BPE and 3A

排量曲线图 Displacement curve

1. 压差是指疏水阀的入口端和出口端的压力差。
 2. 推荐安全系数：不小于2。
1. Pressure difference refers to the pressure difference between the inlet and outlet of the drain valve. 2. Recommended safety factor: ≥2.



蝶型热静力疏水阀
Butterfly thermostatic drain valve



* 阀体垫圈配件(如O型圈), 符合FDA 21 CFR 177.1550所列的许可材质, 并且满足USP VI级(无毒性要求)。

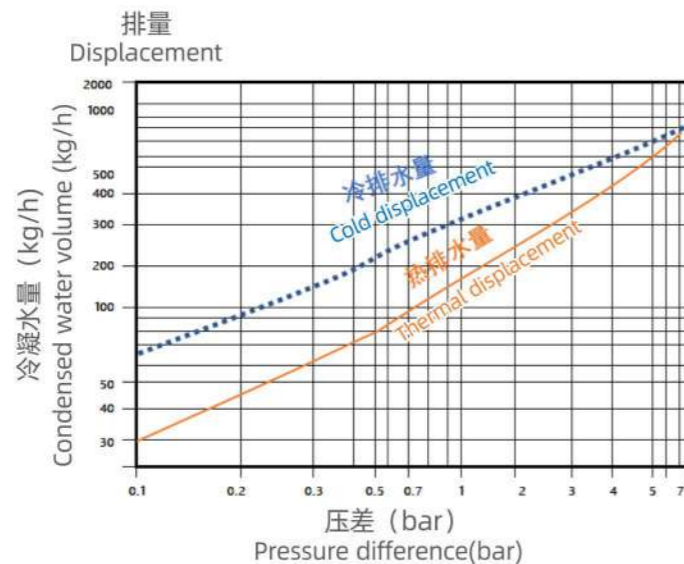
* Body washer fittings (e.g., O-rings) conform to licensed materials listed in FDA21CFR177.1550 and meet USPVI Class (Non-toxicity).

序号 S/N	名称 Name	材质 Materials
1	螺母 Nut	316L
2	上阀体 Upper valve body	316L
3	过滤网 Filter screen	316L
4	阀体垫圈 Body washer	Fluorine rubber
5	X-元件 X-element	316L
6	下阀体 Lower valve body	316L
7	螺帽 Nut	316L

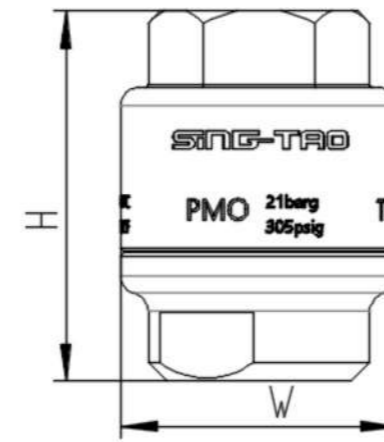
尺寸范围: DN15-DN25 (1/2" -1") Dimension range: DN15-DN25 (1/2" -1")	阀体材质: 316L Body material: 316L
工作温度: 0°C-150°C Working temperature: 0°C-150°C	接口形式: 卡盘 Interface form: Clamp
压力等级: 7bar Pressure rating: 7bar	设计标准: ASME BPE、3A Standard: ASME BPE and 3A

排量曲线图
Displacement curve

- 压差是指疏水阀的入口端和出口端的压力差。
- 推荐安全系数: 不小于2。

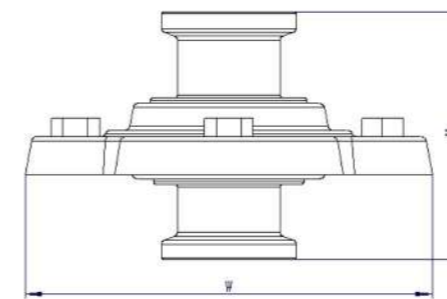


外部尺寸图
External Dimensional Drawing



圆柱型热静力疏水阀
Cylindrical thermostatic drain valve

尺寸 Size	卡盘 Clamp		螺纹 NPT	
	H	H	H	W
DN15	70	45	60	45
DN20	84	45	60	45
DN25	100	50.4	72	45



蝶型热静力疏水阀
Butterfly thermostatic drain valve

尺寸 Size	卡盘 Clamp	
	H	W
DN15	49	75
DN20	49	75
DN25	53	75

型号 Model	NPT、卡盘 NPT Screw thread and clamp
口径: Caliber:	1/2", 3/4", 1" (ASME BPE)
最大允许压力: PMA Maximum allowable pressure: PMA	0.7Mpa
饱和蒸汽下最大工作压力: PMO Maximum working pressure under saturated steam: PMO	0.7Mpa
最小工作压力: Minimum working pressure:	0.1Mpa
最高允许温度: TMA Maximum allowable temperature: TMA	170°C
最高工作温度: TMO Maximum working temperature: TMO	180°C
最低工作温度: Minimum working temperature	0°C

疏水阀编码、代号规则
Encoding and coding rules for drain valves

位号 Tag Number	1	2	3、4	5	6	7	8
代码 Code	H	S	15	P	S	E	M
特性定义 Property definition	阀门类型 Valve type	液囊过冷度 Supercooling degree of liquid sacs	口径 Caliber	口径标准 Caliber standard	连接形式 Connection form	阀体材质 Body material	抛光 Polishing

位号 Tag Number	代码 Code	阀门类型 Valve type
1	H	热静力疏水阀 Thermostatic steam trap
	J	碟片疏水阀 Disc drain valve
	L	杠杆浮球疏水阀 Lever float drain valve
2	代码 Code	液囊过冷度 Supercooling degree of liquid sacs
	S	STD 5°C
	H	HIGH 20°C
	L	LOW 3°C
3、4	代码 Code	口径 Caliber
	15	15 1/2"
	20	20 3/4"
5	代码 Code	口径标准 Caliber standard
	P	ASME BPE
	N	NPT

位号 Tag Number	代码 Code	连接形式 Connection form
6	S	卡盘 Chuck
	N	NPT螺纹 NPT thread
7	代码 Code	阀体材质 Body material
	D	A182 F304(锻造304) A182 F304 (Forged 304)
	E	A182 F316L(锻造316L) A182 F316L (Forged 316L)
	W	WCB
8	代码 Code	抛光 Burnishing
	M	机械抛光 Mechanical polishing
	E	电解抛光 Electrolytic polishing
	O	其他 Other

卫生级球阀
SANITARY BALL VALVE

两通球阀
Two-way Ball valve



应用: 根据3A、ASME BPE标准设计, 用于食品饮料、酿酒、生物制药等领域。

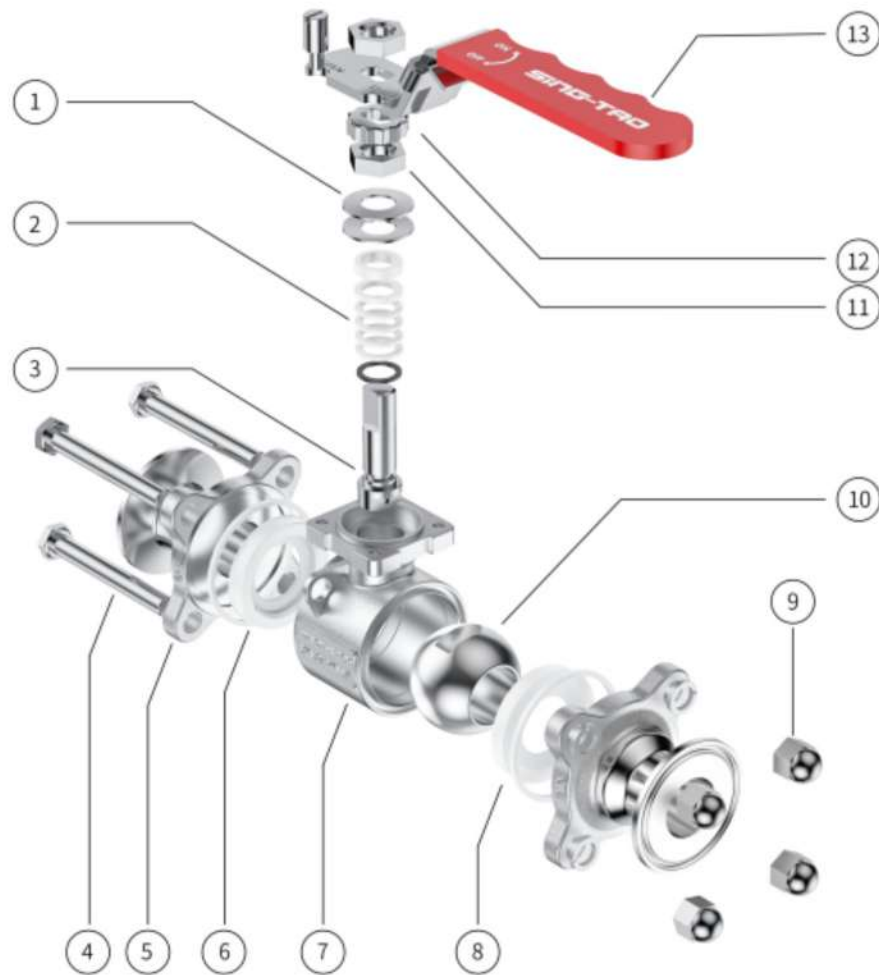
特点: 球阀具有流体阻力小、开关迅速方便、外型尺寸小、密封好、使用寿命长、安全可靠性和通球扫线等特点而受到欢迎。

Application: Designed according to 3A and ASME BPE standards, it is used in food and beverage, wine making, biopharmaceutical and other fields.

Features: Ball valve is popular because of its small fluid resistance, quick and convenient opening and closing, small dimension, good sealing, long service life, high safety and reliability, and ball passing and wire sweeping.

尺寸范围: DN15-DN100 (1/2" -4") Dimension range: DN15-DN100(1/2"-4")	阀座材质: PTFE/TFM Seat material: PTFE/TFM
工作温度: PTFE-10°C-150°C Working temperature: PTFE-10°C-150°C	阀座结构: 全包/半包 Seat structure: Full-covered/half-covered
压力等级: 16bar Pressure rating: 16bar	阀体材质: 304/316L Body material: 304/316L
驱动方式: 手动/气动 Driving mode: Manual/pneumatic	接口形式: 焊接、卡盘 Interface form: Welding and clamping
自控单元: 反馈装置、定位器 Automatic control unit: Feedback device and locator	设计标准: ASME BPE、3A Standard: ASME BPE and 3A

- 稳健的工程设计
Steady engineering design
- 长寿命、长质保期
Long service life and long warranty period



编号 No.	描述 Description	材质 (EN) Material (EN)
1	蝶形弹簧 Belleville spring	InconelX-750
2	填料 Filler	PTFE
3	阀杆 Valve stem	A182F304/F316L
4	六角头螺栓 Hexagonal head bolts	A193B8/B8M
5	阀盖 Valve cover	A351CF8/CF3M
6	密封垫片 Sealing gasket	PTFE
7	阀体 Valve body	A351CF8/CF3M

编号 No.	描述 Description	材质 (EN) Material (EN)
8	阀座 Seat	PTFE
9	带帽螺母 Cap nut	A1948/8M
10	球体 Sphere	A182F304/F316L
11	六角螺母 Hexagon nut	A1948/8M
12	止退垫片 Retaining washer	SS304/316L
13	手柄 Handle	SS304+PE

压力-温度额定值 Rated Pressure-temperature Values

球阀的主要密封件为阀座，阀座性能是决定阀门使用寿命的主要因素之一。

星岛球阀根据工况需求，阀座材质有TFM和PTFE可选。

阀座压力-温度额定值是在指定温度下用表压表示的最大允许工作压力。当温度升高时，最大允许工作压力随之降低。

选型时，应根据阀门使用的工况温度和使用压力参照压力-温度图表来确定合适的阀座材料。

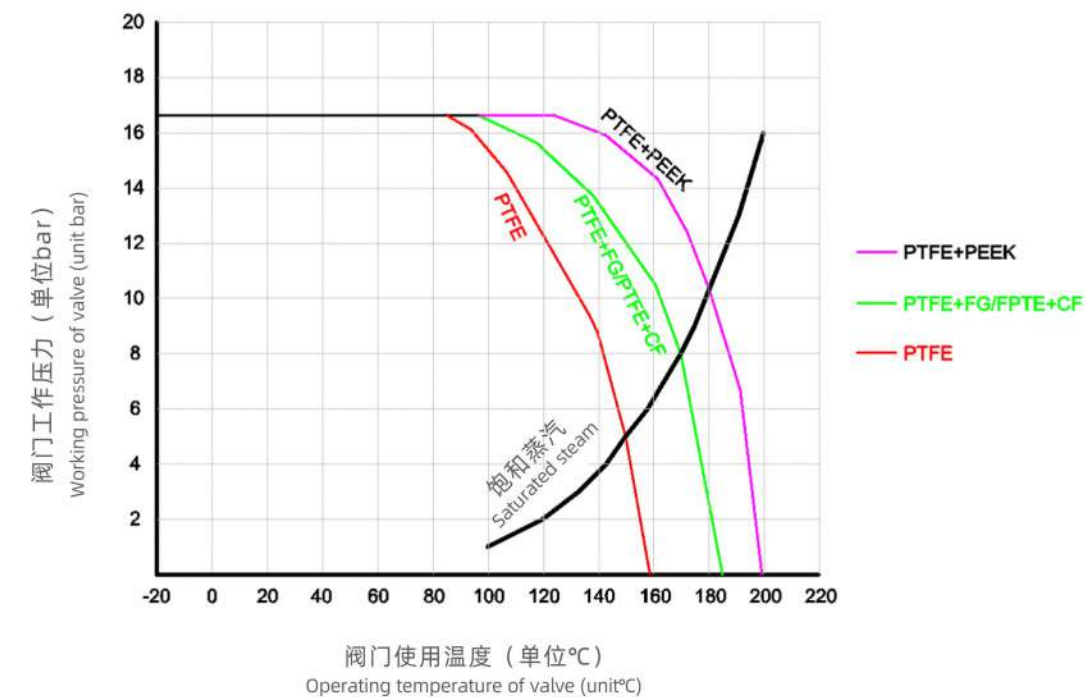
The main seal of ball valve is seat, and the performance of seat is one of the main factors that determine the service life of the valve.

The seat materials of SingTao Ball Valve are TFM and PTFE.

Seat pressure-temperature rating is the maximum allowable working pressure expressed by gauge pressure at the specified temperature. When the temperature rises, the maximum allowable working pressure decreases.

When selecting the type, the appropriate seat material should be determined according to the operating temperature and working pressure of the valve with reference to the pressure-temperature chart.

星岛球阀压力-温度额定值图表
SingTao Ball Valve Pressure-Temperature Rating Chart

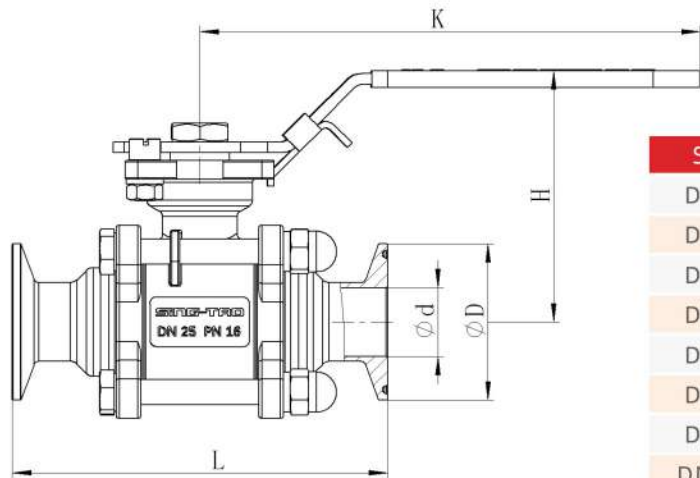


注：①可用于温度150°C的SIP（蒸汽），仅限于PTFE密封材质并阀门处于全开状态。②选用焊式球阀时，请先拆后焊。

Notes: ① It can be used for SIP (steam) with a temperature of 150C, which is limited to PTFE sealing material and the valve is fully open.

② When welding ball valve is selected, please disassemble it before welding.

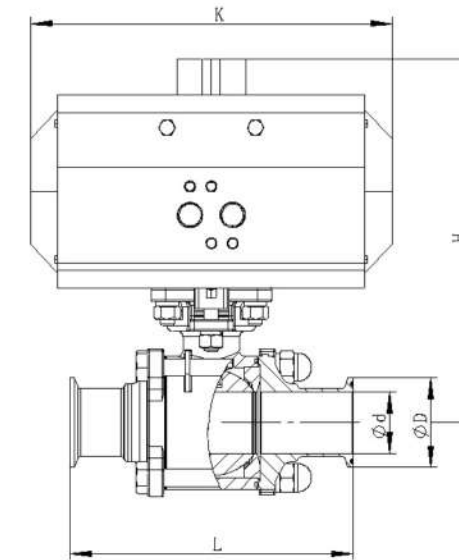
手动卡接式直通球阀
Manual clamping straight-through ball valve



Size	d	D	L	K	H
DN15	9.4	25	90	135	65
DN20	15.8	25	101	135	69
DN25	22.1	50.4	121	155	86
DN40	34.8	50.4	160	185	110
DN50	47.5	63.9	165	185	120
DN65	60.2	77.4	200	230	152
DN80	72.9	90.9	230	345	162
DN100	97.4	119	255	382	183

手动卡接式直通球阀尺寸表
Dimension table of manual chuck straight-through ball valve

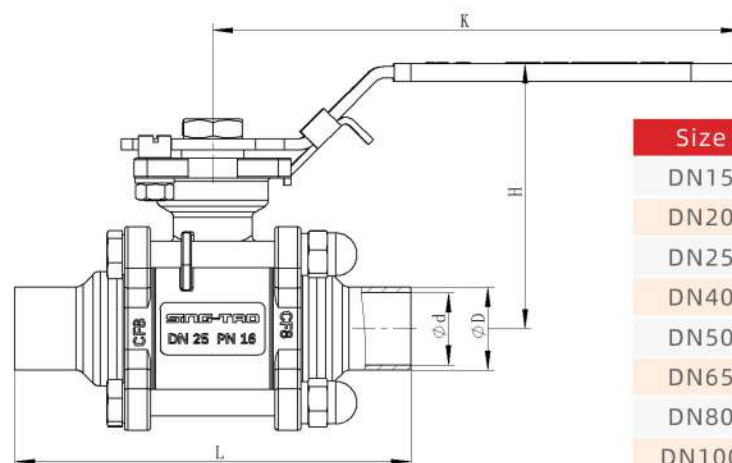
气动卡接式直通球阀
Pneumatic clamping straight-through ball valve



Size	d	D	L	K	H
DN15	9.4	25	90	140	138
DN20	15.8	25	101	158	156
DN25	22.1	50.4	121	158	165
DN40	34.8	50.4	160	248	223
DN50	47.5	63.9	165	268	247
DN65	60.2	77.4	200	268	296
DN80	72.9	90.9	230	315	307
DN100	97.4	119	255	345	341

气动卡接式直通球阀尺寸表
Dimension table of pneumatic chuck straight-through ball valve

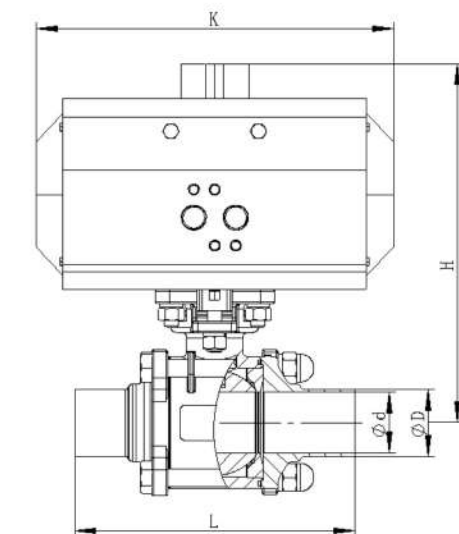
手动焊接式直通球阀
Manual welded straight-through ball valve



Size	d	D	L	K	H
DN15	9.4	12.7	90	135	65
DN20	15.8	19.05	101	135	69
DN25	22.1	25.4	121	155	86
DN40	34.8	38.1	160	185	110
DN50	47.5	50.8	165	185	120
DN65	60.2	63.5	200	230	152
DN80	72.9	76.2	230	345	162
DN100	97.4	101.6	255	382	183

手动焊接式直通球阀尺寸表
Dimension table of manual welded straight-through ball valve

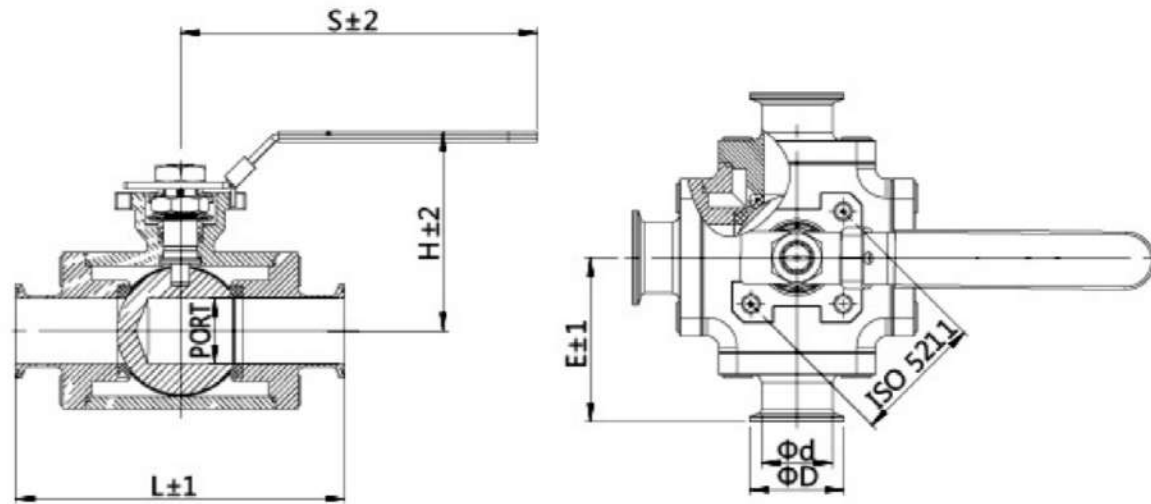
气动焊接式直通球阀
Pneumatic straight-through ball valve



Size	d	D	L	K	H
DN15	9.4	12.7	90	145	138
DN20	15.8	19.05	101	145	156
DN25	22.1	25.4	121	160	165
DN40	34.8	38.1	160	185	223
DN50	47.5	50.8	165	185	247
DN65	60.2	63.5	200	230	296
DN80	72.9	76.2	230	345	307
DN100	97.4	101.6	255	382	341

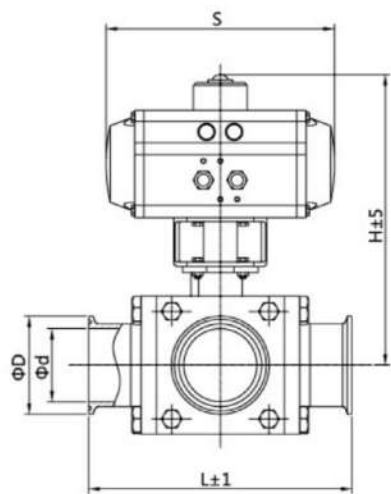
气动焊接式直通球阀尺寸表
Dimension table of pneumatic straight-through ball valve

三通球阀
3-way ball valve



手动卡接式三通球阀尺寸表
Dimension table of manual clamping three-way ball valve

Size	PORT	d	D	L	E	H	S
DN15	9.4	12.7	25	110	74	89	187
DN20	15.8	19.05	25	110	78	98	218
DN25	22.1	25.4	50.4	130	84	102	218
DN40	34.8	38.1	50.4	175	110	127	135
DN50	47.5	50.8	63.9	220	122	139	252
DN65	60.2	63.5	77.4	240	135	166	252
DN80	72.9	76.2	90.9	290	146	170	252
DN100	97.4	101.6	119	330	164	193	600



Size	d	D	L	H	S
DN15	9.4	25	110	89	187
DN20	15.8	25	110	98	218
DN25	22.1	50.4	130	102	218
DN40	34.8	50.4	175	127	135
DN50	47.5	63.9	220	139	252
DN65	60.2	77.4	240	166	252
DN80	72.9	90.9	290	170	252
DN100	97.4	119	330	193	600

球阀编码、代号规则
Code and code rules for ball valves

位号 Tag Number	1	2	3、4	5	6	7	8	9	10	11	12
代码 Code	B	6	20	P	P	S	1	A	F	C	E
特性定义 Property definition	阀门类型 Valve type	控制形式 Control form	口径 Caliber	流道 Runner	口径标准 Caliber standard	连接形式 Connection form	结构形式 Structural style	阀体材质 Body material	阀座材质 Seat material	其他 Other	抛光 Polishing

位号 Tag Number	代码 Code	阀门类型 Valve type
1	B	球阀 Ball valve
2	代码 Code	控制形式 Control form
	1	手柄 Handle
	6	单作用（水平90°旋转）不带附件 Single acting (Horizontal 90° rotation) without accessories
	7	单作用（水平90°旋转）带位置反馈 Single acting (Horizontal 90° rotation) with position feedback
	8	双作用（水平90°旋转）不带附件 Double acting (Horizontal 90° rotation) without accessories
	9	单作用（水平90°旋转）带电磁阀 Single acting (Horizontal 90° rotation) with solenoid valve
	A	双作用（水平90°旋转）带位置反馈 Dual action (Horizontal 90° rotation) with position feedback
	B	双作用（水平90°旋转）带电磁阀 Double acting (Horizontal 90° rotation) with solenoid valve
3、4	代码 Code	口径 Caliber
	15	15
	20	20
	25	25
	32	32
	40	40
	50	50
	65	65
	80	80
1A	100	

位号 Tag Number	代码 Code	流道 Runner
5	P	全通径 Full bore
	R	缩径 Reduced diameter
6	代码 Code	口径标准 Caliber standard
	P	ASME BPE
	I	ISO 2037
7	代码 Code	连接形式 Connection form
	S	卡盘 Tri-Clamp
	W	焊接 Weld
	7	卡焊 Tri&Weld
8	代码 Code	结构形式 Structural style
	1	直通式 Through type
	L	三通式L型 Three way L-shaped
	T	三通式T型 Three way T-shaped

位号 Tag Number	代码 Code	阀体材质 Body material
9	A	A351 CF8(铸造304) A351 CF8 (Cast 304)
	B	A351 CF3M(铸造316L) A351 CF3M (Cast 316L)
	D	A182 F304(锻造304) A182 F304 (Forged 304)
	E	A182 F316L(锻造316L) A182 F316L (Forged 316L)
10	代码 Code	阀座材质 Seat material
	F	PTFE
	M	TFM
	R	RPTFE
11	代码 Code	其他 Other
	Z	手动 Manual
	C	气动常闭 Pneumatic normally closed
	O	气动常开 Pneumatic normally open
12	代码 Code	抛光 Burnishing
	M	机械抛光 Mechanical polishing
	E	电解抛光 Electrolytic polishing
	O	其他 Other

卫生级单向阀 SANITARY CHECK VALVE



竖直安装式单向阀
Vertical mounted check valve



水平安装式单向阀
Horizontal mounted check valve

单向阀用于控制工艺液体或气体的流向，阀门易于安装、免维护，同时防止由于反向流动、压力浪涌、水锤和空气夹带而对管道和设备造成潜在损坏或系统停机。

Check valve is used to control the flow direction of process liquid and gas. The valve is easy to install and maintenance-free. At the same time, it can prevent potential damage to pipelines and equipment or system shutdown due to reverse flow, pressure surge, water hammer and air entrainment.

特点:

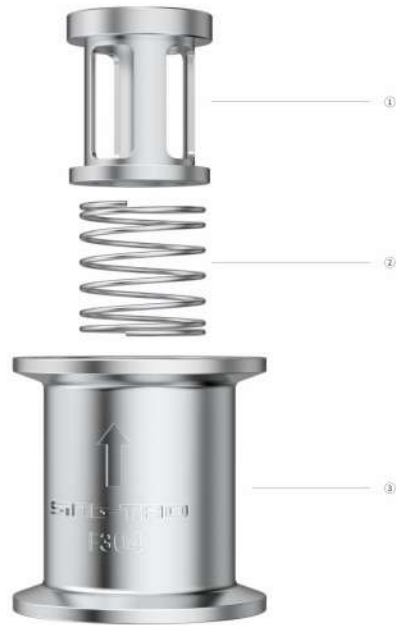
Features:

- 通过消除真空条件来平衡系统内的压力，从而保护过程系统免受潜在损坏；
Balance the pressure in the system by eliminating the vacuum condition, thus protecting the process system from potential damage;
- 通过防止逆流和水锤，确保设备安全；
Ensure equipment safety by preventing backflow and water hammer;
- 全卫生结构设计，无死角、残留。
The whole sanitary structure design, no dead angle, residue.

尺寸范围: DN20-DN65 (3/4" -2 1/2") Dimension range: DN20-DN65 (3/4" -2 1/2")	阀体材质: 304/316L Body material: 304/316L
温度: -10°C-130°C Temperature: -10°C-130°C	接口形式: 焊接、卡盘 Interface form: Welding and clamping
压力等级: 10bar Pressure rating: 10bar	设计标准: ASME BPE、3A Standard: ASME BPE and 3A
驱动方式: 自动 Driving mode: Automatic	

阀座工况说明 Clamp		
阀座材质 Seat material	适用温度 Temperature	蒸汽 (灭菌) Steam (Sterilization)
PTFE	- 10-150°C	持续温度*150°C Continuous temperature * 150 °C
TFM	- 10-180°C	持续温度*180°C Continuous temperature * 180 °C
RPTFE	0-130°C	150°C最多持续20分钟 150 °C, max.20 min

表面光泽度说明 Surface glossiness description		
抛光类型 Polishing type	粗糙度 Roughness	工艺 Technology
机械抛光 Mechanical polishing	Ra≤0.6µm	内表面机械抛光，外表面玻璃珠喷砂 Internal surface mechanical polishing, external surface glass bead sandblasting
电解抛光 Electrolytic polishing	Ra≤0.4µm	内部/外部电解抛光 Internal/external electrolytic polishing
其他 Other	Ra≤0.2µm	内表面机械抛光，外表面玻璃珠喷砂 Internal surface mechanical polishing, external surface glass bead sandblasting



竖直安装式单向阀 (硬密封)
Vertical mounted check valve(hard seal)

编号 No.	描述 Description	材质 (EN) Material (EN)
1	阀瓣 Valve clack	A276304/316L
2	弹簧 Spring	SS304/316L
3	阀体 Valve body	A276304/316L



水平安装式单向阀
Horizontal mounted check valve

编号 No.	描述 Description	材质 (EN) Material (EN)
1	阀体 Valve body	A276304/316L
2	阀瓣 Valve clack	A276304/316L
3	内六角螺钉 Inner hexagon screw	A193B8/B8M
4	阀盖 Valve cover	A351 CF8/316L
5	弹簧 Spring	SS304/316L
6	密封垫片 Sealing gasket	PTFE

单向阀编码、代号规则
Code and coding rules for one-way valves

位号 Tag Number	1	2	3、4	5	6	7	8	9
代码 Code	V	S	25	P	S	E	M	N
特性定义 Property definition	阀门类型 Valve type	密封材质 Sealing material	口径 Caliber	口径标准 Caliber standard	连接形式 Connection form	阀体材质 Body material	抛光 Polishing	开启压力 Opening pressure

位号 Tag Number	代码 Code	阀门类型 Valve type	
1	C	水平止回阀 Horizontal check valve	
	V	竖直止回阀 Vertical check valve	
2	代码 Code	密封材质 Sealing material	
	E	EPDM	
	S	SUS硬密封 SUS hard seal	
	F	氟橡胶 Fluororubber	
	P	PTFE	
3、4	代码 Code	口径 Caliber	
	20	20	3/4"
	25	25	1"
	40	40	1 1/2"
	50	50	2"
5	代码 Code	口径标准 Caliber standard	
	P	ASME BPE	
	I	ISO 2037	

位号 Tag Number	代码 Code	连接形式 Connection form
6	S	卡盘 Tri-Clamp
	W	焊接 Weld
7	代码 Code	阀体材质 Body material
	D	A182 F304(锻造304) A182 F304 (Forged 304)
	E	A182 F316L(锻造316L) A182 F316L (Forged 316L)
	B	A351 CF3M(铸造316L) A351 CF3M (Cast 316L)
8	代码 Code	抛光 Burnishing
	M	机械抛光 Mechanical polishing
	E	电解抛光 Electrolytic polishing
	O	其他 Other
9	代码 Code	开启压力 Opening pressure
	L	0.08bar
	N	0.3bar
	H	0.6bar

角座阀 ANGLE SEAT VALVE



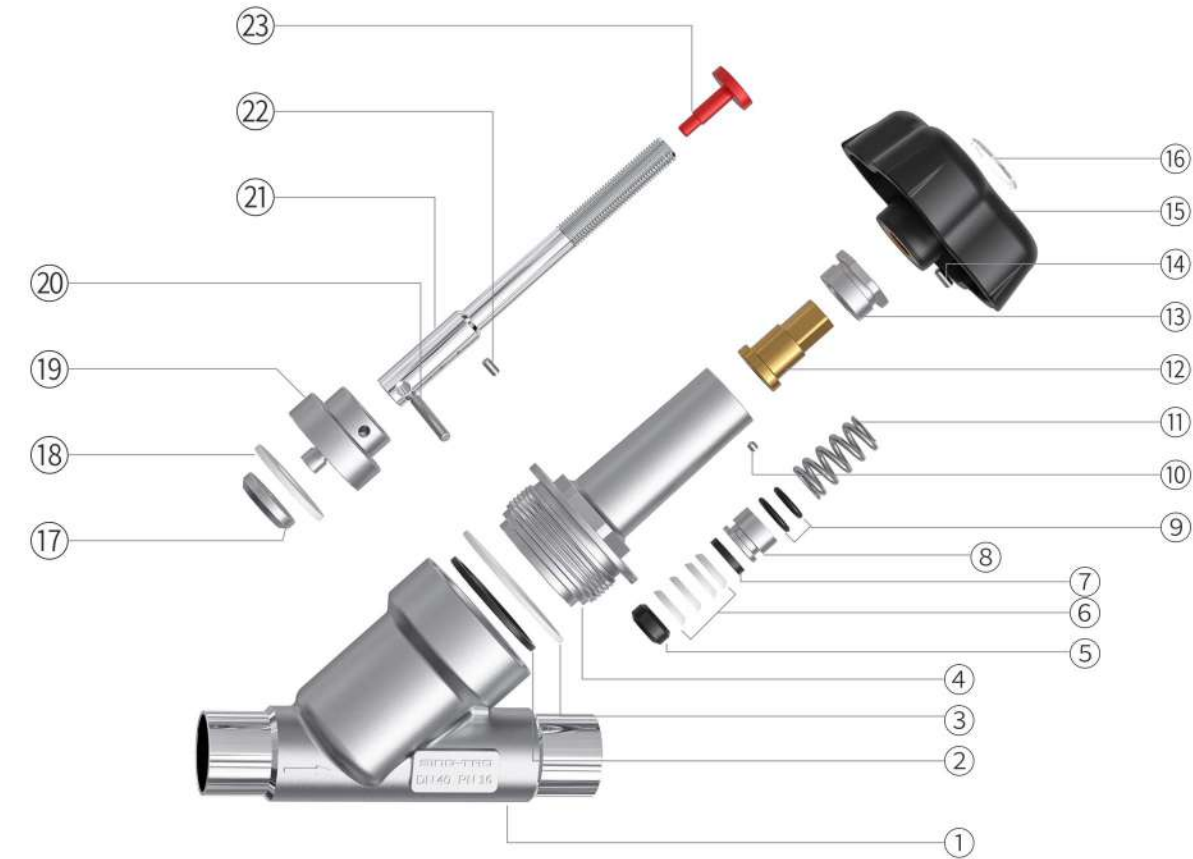
应用: 星岛角座阀根据ASME BPE标准设计, 主要应用于食品饮料、酿造、生物制药等领域。

特点: 流量大、耐高压、更经济、免维护、易安装、能耗低, 非常适用于短时间内高频气动。反应灵敏、动作准确, 可以配合电磁阀或定位器使用, 具有精准流量调节等功能。例如在湿热灭菌柜上应用角座阀可以实现蒸汽流量的精准控制。

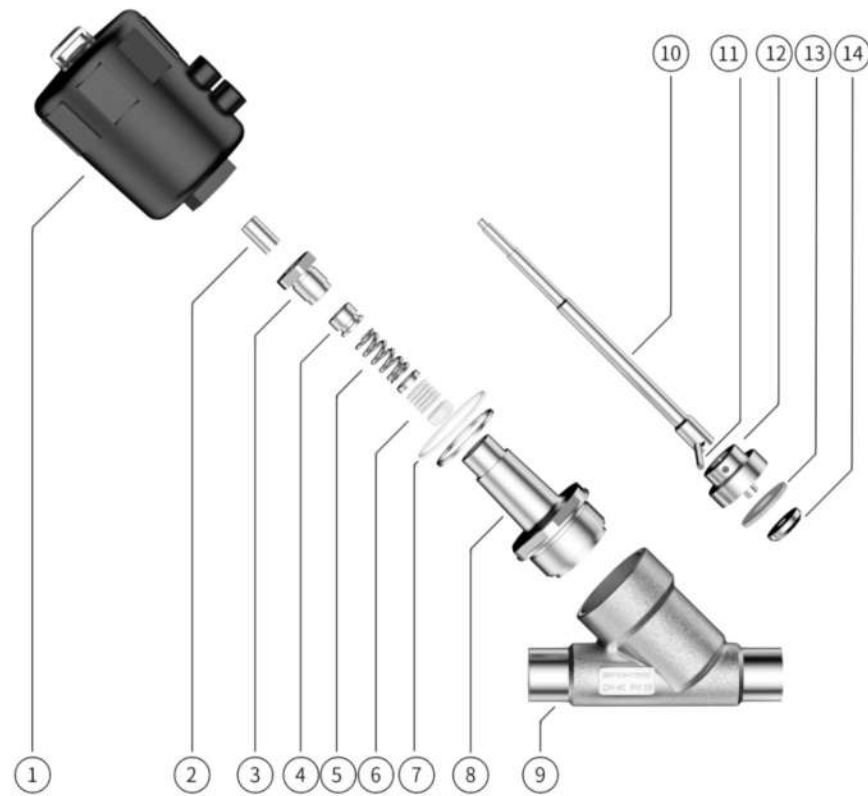
Application: The angle seat valve of SingTao is designed according to ASMEBPE standard, and is mainly used in food and beverage, brewing, biopharmaceuticals and other fields.

Features: Large flow, high pressure resistance, more economy, maintenance-free, easy installation and low energy consumption, so it is very suitable for high-frequency pneumatic operation in a short time. Sensitive response, accurate action, can be used with solenoid valve or positioner, and has the functions of accurate flow regulation. For example, the application of angle seat valve in hot and humid sterilization cabinet can realize the precise control of steam flow.

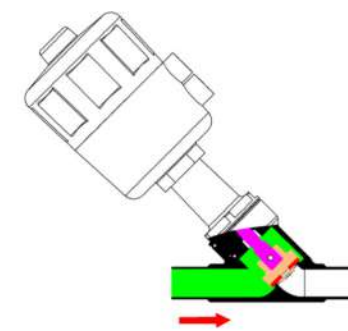
尺寸范围: DN20-DN65 (3/4" -2½") Dimension range: DN20-DN65 (3/4" -2½")	阀座材质: PTFE Seat material: PTFE
工作温度: -20°C-150°C Working temperature: -20°C-150°C	阀体材质: 304/316L Body material: 304/316L
压力等级: 16bar Pressure rating: 16bar	接口形式: 焊接、卡盘、法兰 Interface form: Welding, clamp and Flange
驱动方式: 手动/气动 Driving mode: Manual/pneumatic	设计标准: ASME BPE、3A Standard: ASME BPE and 3A
自控单元: 反馈装置、定位装置 Automatic control unit: Feedback device, positioning device	



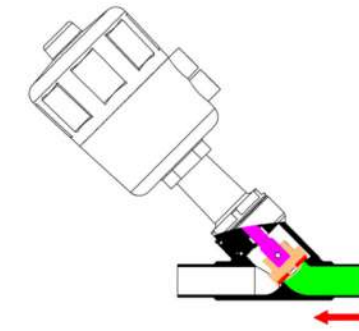
手动角座阀 Manual angle seat valve					
编号 No.	描述 Description	材质 (EN) Material (EN)	编号 No.	描述 Description	材质 (EN) Material (EN)
1	阀体 Valve body	A351 CF8/CF3M	13	压紧螺母 Compression nut	A276 304/316L
2	防火垫片 Fireproof gasket	Flexible graphite+304/316L	14	紧定螺钉 Set screw	A193 B8
3	密封垫片 Sealing gasket	PTFE	15	手轮 Handwheel	Nylon PA66+GF
4	阀盖 Bonnet	A276 304/316L	16	手轮盖板 Handwheel cover plate	Pmma
5	下填料垫 Lower packing pad	PTFE+CF	17	阀座压盖 Valve seat gland	A276 304/316L
6	填料 Packing	PTFE	18	阀座 Seat	PTFE
7	上填料 Upper packing	PTFE+CF	19	阀瓣 Valve clack	A276 304/316L
8	密封环 Sealing ring	A276 304/316L	20	销钉 Pin	A276 304/316L
9	O型圈 O-ring	VITON	21	阀杆 Valve stem	A182 F304/F316L
10	紧定螺钉 Set screw	A193 B8	22	销钉 Pin	A276 304/316L
11	弹簧 Spring	Inconel X-718	23	开关指示 Switch indication	POM
12	阀杆螺母 Valve rod nut	QAL 9-4			



压力-温度额定值
Rated Pressure-temperature Values



高进低出-普通型
High-inlet and low-outlet - ordinary type

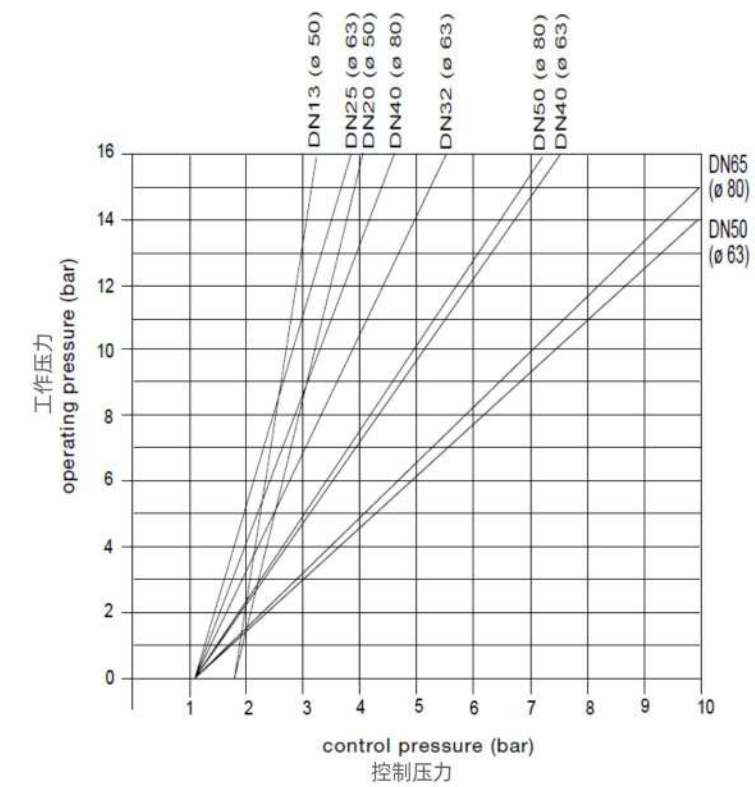


低进高出-防水型
Low-inlet and high-outlet - waterproof hammer

气动角座阀 Pneumatic angle seat valve		
编号 No.	描述 Description	材质 (EN) Material (EN)
1	气动执行器 Pneumatic actuator	NYLON module 组件
2	无油轴承 Oil-free bearing	SS 304+PTFE
3	压盖 Gland	A276 304/316L
4	密封套 Seal sleeve	A276 304/316L
5	弹簧 Spring	A276 304
6	阀杆密封组件 Stem seal assembly	PTFE
7	密封垫片 Sealing gasket	PTFE
8	阀盖 Valve cover	A276 304/316L
9	阀体 Valve body	A351 CF8/CF3M
10	阀杆 Valve stem	A182 F304/F316L
11	销钉 Pin	SS 304/316L
12	阀瓣 Valve clack	A276 304/316L
13	阀座 Seat	PTFE
14	压紧螺母 Gland nut	A276 304/316L

Control function B
控制功能

Actuator 50 - 80 mm
执行机构



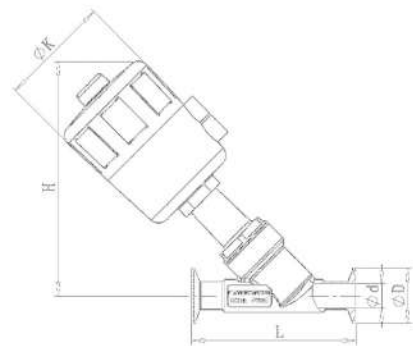
压力-温度额定值
Dimension table of angle seat valve

手动卡接式-ASME BPE
Manual clamping type - ASME BPE

Size	d	D	L	K	H
DN20	15.8	25	130	85	69
DN25	22.1	50.4	140	85	86
DN40	34.8	50.4	150	110	110
DN50	47.5	63.9	180	110	120
DN65	60.2	77.4	195	130	152

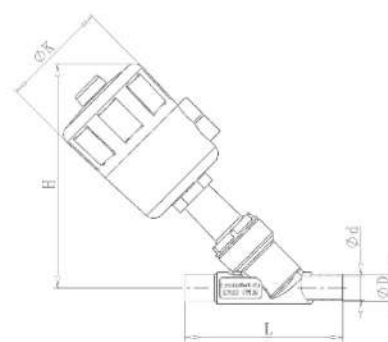
手动焊接式-ASME BPE
Manual welding type - ASME BPE

Size	d	D	L	K	H
DN20	15.8	19.05	130	85	69
DN25	22.1	25.4	140	85	86
DN40	34.8	38.1	150	110	110
DN50	47.5	50.8	180	110	120
DN65	60.2	63.5	195	130	152



气动卡接式-ASME BPE
Pneumatic clamp type - ASME BPE

Size	d	D	L	K	H
DN20	15.8	25	130	50	150
DN25	22.1	50.4	140	63	180
DN40	34.8	50.4	150	80	190
DN50	47.5	63.9	180	100	220
DN65	60.2	77.4	195	100	250



气动焊接式-ASME BPE
Pneumatic welding type - ASME BPE

Size	d	D	L	K	H
DN20	15.8	19.05	130	50	150
DN25	22.1	25.4	140	63	180
DN40	34.8	38.1	150	80	190
DN50	47.5	50.8	180	100	220
DN65	60.2	63.5	195	100	250

角座阀/比例调节阀编码、代号规则
Encoding and coding rules for corner seat valves/proportional control valves

位号 Tag Number	1	2	3、4	5	6	7	8	9	10	11	12
代码 Code	A	3	20	P	P	W	1	A	F	Z	M
特性定义 Property definition	阀门类型 Valve type	控制形式 Control form	口径 Caliber	流道 Runner	口径标准 Caliber standard	连接形式 Connection form	结构形式 Structural style	阀体材质 Body material	阀座材质 Seat material	其他 Other	抛光 Polishing

位号 Tag Number	代码 Code	阀门类型 Valve type
1	A	角座阀 Corner seat valve
	E	比例调节阀 Proportional control valve
2	代码 Code	控制形式 Control form
	1	塑胶手轮 Plastic handwheel
	3	竖直塑料气动常闭 Vertical plastic pneumatic normally closed
	5	竖直不锈钢气动常闭 Vertical stainless steel pneumatic normally closed
3、4	代码 Code	口径 Caliber
	20	20
	25	25
	40	40
	65	65

星岛系列-7 角座阀

Sing-Tao Series-8 Angle Seat Valve

位号 Tag Number	代码 Code	流道 Runner
5	P	全通径 Full bore
6	代码 Code	口径标准 Caliber standard
	P	ASME BPE
	I	ISO 2037
7	代码 Code	连接形式 Connection form
	S	卡盘 Tri-Clamp
	W	焊接 Weld
	7	卡焊 Tri&Weld
8	代码 Code	结构形式 Structural style
	1	防水锤 Waterproof hammer
	2	不防水锤 Non waterproof hammer
9	代码 Code	阀体材质 Body material
	A	A351 CF8(铸造304) A351 CF8 (Cast 304)
	B	A351 CF3M(铸造316L) A351 CF3M (Cast 316L)

位号 Tag Number	代码 Code	阀座材质 Seat material
10	F	PTFE
	S	SUS
11	代码 Code	其他 Other
	Z	不带附件 Without attachments
	1	带智能定位器ST I1 IPos Equipped with intelligent locator ST I1 IPos
	2	ST I2 IPos
	3	ST I3 IPos
	4	带位置反馈器ST F1 FPos ST F1 FPos with position feedback device
	5	ST F2 FPos
	6	ST F3 FPos
12	代码 Code	抛光 Burnishing
	M	机械抛光 Mechanical polishing
	E	电解抛光 Electrolytic polishing
	O	其他 Other

应用场景 Application scenarios



生物医药
Biological medicine



日化饮品
Daily chemical drinks



食品
Food



电子半导体
Electronic semiconductor